

● MS35B

品番	価格	外径 DO	ピッチ径 DP	ボス寸法		穴径 d(H7)	キー溝寸法		セットスクリュー		
				BD	BL		W	H	M	A	図
MS35B9 D10	960	32	27.85	# 22	20	10	3	1.4	M4	6	図1
MS35B10 D10	960	34	30.82	# 24.5	20	10	3	1.4	M4	6	図1
MS35B10 D12	1,000	34	30.82	# 24.5	20	12	4	1.8	M5	6	図1
MS35B11 D10	990	38	33.81	# 27	20	10	3	1.4	M4	6	図1
MS35B11 D12	1,000	38	33.81	# 27	20	12	4	1.8	M5	6	図1
MS35B11 D14	1,000	38	33.81	# 27	20	14	5	2.3	M6	6	図2
MS35B12 D10	1,030	40	36.80	# 31	20	10	3	1.4	M4	6	図1
MS35B12 D12	1,030	40	36.80	# 30.5	20	12	4	1.8	M5	6	図1
MS35B12 D14	1,030	40	36.80	# 30.5	20	14	5	2.3	M6	6	図1
MS35B12 D15	1,030	40	36.80	# 30.5	20	15	5	2.3	M6	6	図1
MS35B12 D16	1,050	40	36.80	# 30.5	20	16	5	2.3	M6	6	図1
MS35B12 D17	1,080	40	36.80	# 31	20	17	5	2.3	M6	6	図1
MS35B13 D10	1,030	44	39.80	# 32	20	10	3	1.4	M4	6	図1
MS35B13 D12	1,030	44	39.80	# 32	20	12	4	1.8	M5	6	図1
MS35B13 D14	1,030	44	39.80	# 32	20	14	5	2.3	M6	6	図1
MS35B13 D15	1,050	44	39.80	# 32	20	15	5	2.3	M6	6	図1
MS35B13 D16	1,080	44	39.80	# 32	20	16	5	2.3	M6	6	図1
MS35B13 D17	1,080	44	39.80	# 32	20	17	5	2.3	M6	6	図1
MS35B14 D10	1,080	47	42.80	30	20	10	3	1.4	M4	7	図1
MS35B14 D12	1,080	47	42.80	32	20	12	4	1.8	M5	6	図1
MS35B14 D14	1,080	47	42.80	32	20	14	5	2.3	M6	6	図1
MS35B14 D15	1,110	47	42.80	32	20	15	5	2.3	M6	6	図1
MS35B14 D16	1,130	47	42.80	30	20	16	5	2.3	M6	7	図1
MS35B14 D17	1,130	47	42.80	30	20	17	5	2.3	M6	7	図1
MS35B14 D18	1,130	47	42.80	30	20	18	6	2.8	M6	7	図2
MS35B14 D19	1,130	47	42.80	30	20	19	6	2.8	M6	7	図2
MS35B14 D20	1,130	47	42.80	30	20	20	6	2.8	M6	7	図2
MS35B15 D10	1,080	50	45.81	35	20	10	3	1.4	M4	7	図1
MS35B15 D12	1,080	50	45.81	35	20	12	4	1.8	M5	6	図1
MS35B15 D14	1,080	50	45.81	35	20	14	5	2.3	M6	7	図1
MS35B15 D15	1,130	50	45.81	35	20	15	5	2.3	M6	6	図1
MS35B15 D16	1,130	50	45.81	35	20	16	5	2.3	M6	7	図1
MS35B15 D17	1,130	50	45.81	35	20	17	5	2.3	M6	6	図1
MS35B15 D18	1,130	50	45.81	35	20	18	6	2.8	M6	6	図1
MS35B15 D19	1,130	50	45.81	35	20	19	6	2.8	M6	7	図1
MS35B15 D20	1,130	50	45.81	35	20	20	6	2.8	M6	6	図1
MS35B16 D10	1,190	53	48.82	37	20	10	3	1.4	M4	7	図1
MS35B16 D12	1,190	53	48.82	37	20	12	4	1.8	M5	6	図1
MS35B16 D14	1,190	53	48.82	37	20	14	5	2.3	M6	7	図1
MS35B16 D15	1,190	53	48.82	37	20	15	5	2.3	M6	6	図1
MS35B16 D16	1,190	53	48.82	37	20	16	5	2.3	M6	7	図1
MS35B16 D17	1,190	53	48.82	37	20	17	5	2.3	M6	6	図1

#印はボス径に溝があります。

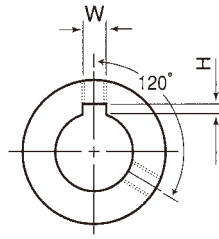
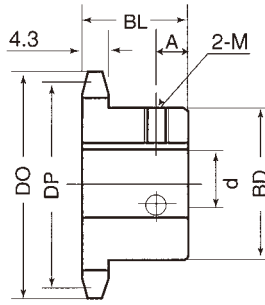
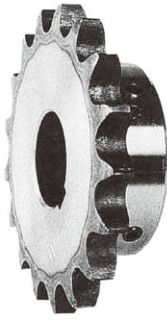


図1

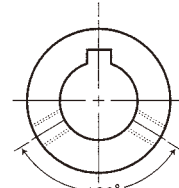
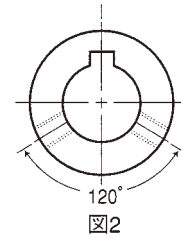
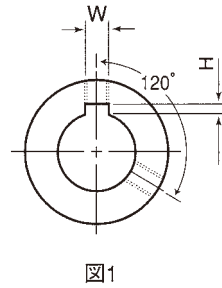
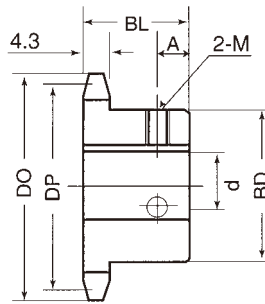
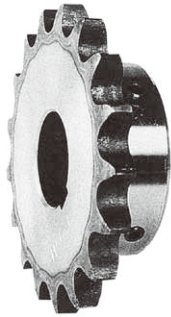


図2

● MS35B

品番	価格	外径 DO	ピッチ径 DP	ボス寸法		穴径 d(H7)	キー溝寸法		セットスクリュー		
				BD	BL		W	H	M	A	図
MS35B16 D18	1,190	53	48.82	37	20	18	6	2.8	M6	7	図1
MS35B16 D19	1,190	53	48.82	37	20	19	6	2.8	M6	7	図1
MS35B16 D20	1,190	53	48.82	37	20	20	6	2.8	M6	6	図1
MS35B16 D22	1,290	53	48.82	37	20	22	6	2.8	M6	7	図1
MS35B16 D25	1,290	53	48.82	37	20	25	8	3.3	M8	7	図2
MS35B17 D12	1,190	56	51.84	41	20	12	4	1.8	M5	7	図1
MS35B17 D14	1,190	56	51.84	41	20	14	5	2.3	M6	7	図1
MS35B17 D15	1,190	56	51.84	41	20	15	5	2.3	M6	6	図1
MS35B17 D16	1,190	56	51.84	41	20	16	5	2.3	M6	7	図1
MS35B17 D17	1,190	56	51.84	41	20	17	5	2.3	M6	7	図1
MS35B17 D18	1,190	56	51.84	41	20	18	6	2.8	M6	7	図1
MS35B17 D19	1,190	56	51.84	41	20	19	6	2.8	M6	7	図1
MS35B17 D20	1,190	56	51.84	41	20	20	6	2.8	M6	7	図1
MS35B17 D22	1,330	56	51.84	41	20	22	6	2.8	M6	7	図1
MS35B17 D25	1,330	56	51.84	41	20	25	8	3.3	M8	7	図1
MS35B18 D12	1,250	59	54.85	44	20	12	4	1.8	M5	6	図1
MS35B18 D14	1,250	59	54.85	44	20	14	5	2.3	M6	7	図1
MS35B18 D15	1,250	59	54.85	44	20	15	5	2.3	M6	6	図1
MS35B18 D16	1,250	59	54.85	44	20	16	5	2.3	M6	6	図1
MS35B18 D17	1,250	59	54.85	44	20	17	5	2.3	M6	7	図1
MS35B18 D18	1,250	59	54.85	44	20	18	6	2.8	M6	7	図1
MS35B18 D19	1,250	59	54.85	44	20	19	6	2.8	M6	7	図1
MS35B18 D20	1,250	59	54.85	44	20	20	6	2.8	M6	6	図1
MS35B18 D22	1,330	59	54.85	44	20	22	6	2.8	M6	7	図1
MS35B18 D25	1,330	59	54.85	44	20	25	8	3.3	M8	7	図1
MS35B19 D12	1,250	62	57.87	47	20	12	4	1.8	M5	7	図1
MS35B19 D14	1,250	62	57.87	47	20	14	5	2.3	M6	7	図1
MS35B19 D15	1,250	62	57.87	47	20	15	5	2.3	M6	7	図1
MS35B19 D16	1,250	62	57.87	47	20	16	5	2.3	M6	7	図1
MS35B19 D17	1,250	62	57.87	47	20	17	5	2.3	M6	7	図1
MS35B19 D18	1,250	62	57.87	47	20	18	6	2.8	M6	7	図1
MS35B19 D19	1,250	62	57.87	47	20	19	6	2.8	M6	7	図1
MS35B19 D20	1,250	62	57.87	47	20	20	6	2.8	M6	7	図1
MS35B19 D22	1,440	62	57.87	47	20	22	6	2.8	M6	7	図1
MS35B19 D25	1,440	62	57.87	47	20	25	8	3.3	M8	7	図1
MS35B20 D12	1,290	65	60.89	50	20	12	4	1.8	M5	7	図1
MS35B20 D14	1,290	65	60.89	50	20	14	5	2.3	M6	6	図1
MS35B20 D15	1,290	65	60.89	50	20	15	5	2.3	M6	6	図1
MS35B20 D16	1,290	65	60.89	50	20	16	5	2.3	M6	7	図1
MS35B20 D17	1,290	65	60.89	50	20	17	5	2.3	M6	7	図1
MS35B20 D18	1,290	65	60.89	50	20	18	6	2.8	M6	6	図1
MS35B20 D19	1,290	65	60.89	50	20	19	6	2.8	M6	7	図1



● MS35B

品番	価格	外径 DO	ピッチ径 DP	ボス寸法		穴径 d(H7)	キー溝寸法		セットスクリュー		
				BD	BL		W	H	M	A	図
MS35B20 D20	1,290	65	60.89	50	20	20	6	2.8	M6	6	図1
MS35B20 D22	1,440	65	60.89	50	20	22	6	2.8	M6	7	図1
MS35B20 D25	1,440	65	60.89	50	20	25	8	3.3	M8	6	図1
MS35B20 D28	1,600	65	60.89	50	20	28	8	3.3	M8	7	図1
MS35B20 D30	1,600	65	60.89	50	20	30	8	3.3	M8	6	図1
MS35B21 D12	1,330	68	63.91	53	20	12	4	1.8	M5	7	図1
MS35B21 D14	1,330	68	63.91	53	20	14	5	2.3	M6	7	図1
MS35B21 D15	1,330	68	63.91	53	20	15	5	2.3	M6	7	図1
MS35B21 D16	1,330	68	63.91	53	20	16	5	2.3	M6	7	図1
MS35B21 D17	1,330	68	63.91	53	20	17	5	2.3	M6	7	図1
MS35B21 D18	1,330	68	63.91	53	20	18	6	2.8	M6	7	図1
MS35B21 D19	1,330	68	63.91	53	20	19	6	2.8	M6	7	図1
MS35B21 D20	1,330	68	63.91	53	20	20	6	2.8	M6	6	図1
MS35B21 D22	1,490	68	63.91	53	20	22	6	2.8	M6	7	図1
MS35B21 D25	1,490	68	63.91	53	20	25	8	3.3	M8	7	図1
MS35B21 D28	1,600	68	63.91	53	20	28	8	3.3	M8	7	図1
MS35B21 D30	1,600	68	63.91	53	20	30	8	3.3	M8	7	図1
MS35B22 D12	1,330	71	66.93	53	20	12	4	1.8	M5	7	図1
MS35B22 D14	1,330	71	66.93	53	20	14	5	2.3	M6	7	図1
MS35B22 D15	1,330	71	66.93	53	20	15	5	2.3	M6	7	図1
MS35B22 D16	1,330	71	66.93	53	20	16	5	2.3	M6	7	図1
MS35B22 D17	1,330	71	66.93	53	20	17	5	2.3	M6	7	図1
MS35B22 D18	1,330	71	66.93	53	20	18	6	2.8	M6	7	図1
MS35B22 D19	1,330	71	66.93	53	20	19	6	2.8	M6	7	図1
MS35B22 D20	1,330	71	66.93	56	20	20	6	2.8	M6	6	図1
MS35B22 D22	1,490	71	66.93	53	20	22	6	2.8	M6	7	図1
MS35B22 D25	1,490	71	66.93	53	20	25	8	3.3	M8	7	図1
MS35B22 D28	1,600	71	66.93	53	20	28	8	3.3	M8	7	図1
MS35B22 D30	1,600	71	66.93	53	20	30	8	3.3	M8	7	図1
MS35B23 D12	1,400	75	69.95	53	20	12	4	1.8	M5	7	図1
MS35B23 D14	1,400	75	69.95	53	20	14	5	2.3	M6	7	図1
MS35B23 D15	1,400	75	69.95	53	20	15	5	2.3	M6	7	図1
MS35B23 D16	1,400	75	69.95	53	20	16	5	2.3	M6	7	図1
MS35B23 D17	1,400	75	69.95	53	20	17	5	2.3	M6	7	図1
MS35B23 D18	1,400	75	69.95	53	20	18	6	2.8	M6	7	図1
MS35B23 D19	1,400	75	69.95	53	20	19	6	2.8	M6	7	図1
MS35B23 D20	1,400	75	69.95	53	20	20	6	2.8	M6	7	図1
MS35B23 D22	1,490	75	69.95	53	20	22	6	2.8	M6	7	図1
MS35B23 D25	1,490	75	69.95	53	20	25	8	3.3	M8	7	図1
MS35B23 D28	1,640	75	69.95	53	20	28	8	3.3	M8	7	図1
MS35B23 D30	1,640	75	69.95	53	20	30	8	3.3	M8	7	図1

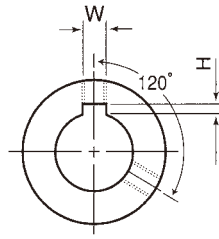
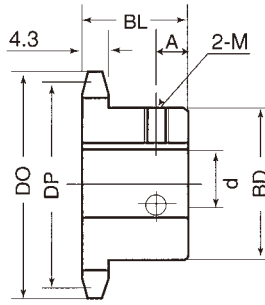
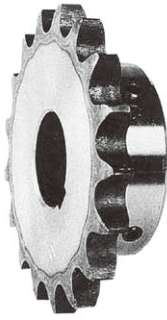


図1

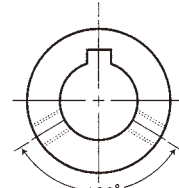
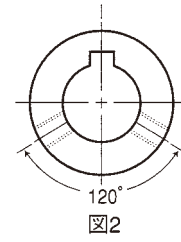
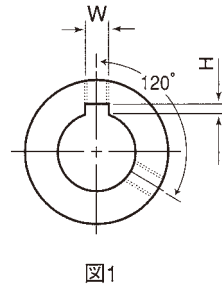
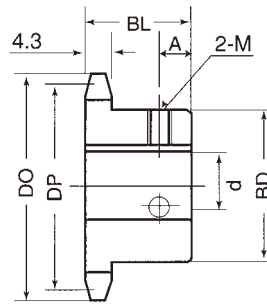
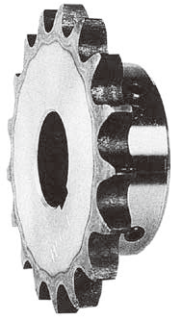


図2

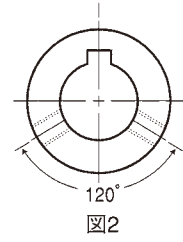
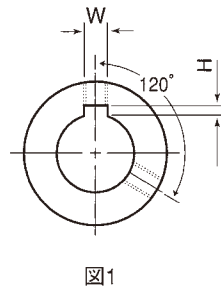
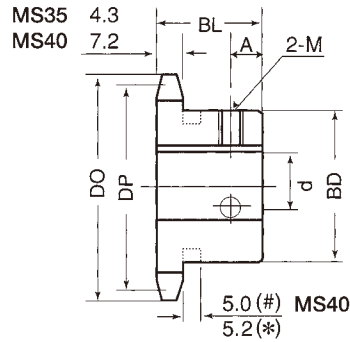
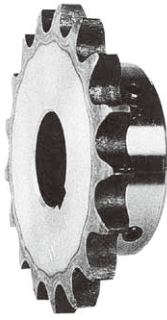
● MS35B

品番	価格	外径 DO	ピッチ径 DP	ボス寸法		穴径 d(H7)	キー溝寸法		セットスクリュー		
				BD	BL		W	H	M	A	図
MS35B24 D12	1,400	78	72.97	53	22	12	4	1.8	M5	8	図1
MS35B24 D14	1,400	78	72.97	53	22	14	5	2.3	M6	8	図1
MS35B24 D15	1,400	78	72.97	53	22	15	5	2.3	M6	8	図1
MS35B24 D16	1,400	78	72.97	53	22	16	5	2.3	M6	8	図1
MS35B24 D17	1,400	78	72.97	53	22	17	5	2.3	M6	8	図1
MS35B24 D18	1,400	78	72.97	53	22	18	6	2.8	M6	8	図1
MS35B24 D19	1,400	78	72.97	53	22	19	6	2.8	M6	8	図1
MS35B24 D20	1,400	78	72.97	53	22	20	6	2.8	M6	8	図1
MS35B24 D22	1,490	78	72.97	53	22	22	6	2.8	M6	8	図1
MS35B24 D25	1,490	78	72.97	53	22	25	8	3.3	M8	8	図1
MS35B24 D28	1,550	78	72.97	53	22	28	8	3.3	M8	8	図1
MS35B24 D30	1,550	78	72.97	53	22	30	8	3.3	M8	8	図1
MS35B25 D15	1,400	81	76.00	53	22	15	5	2.3	M6	8	図1
MS35B25 D16	1,400	81	76.00	53	22	16	5	2.3	M6	8	図1
MS35B25 D17	1,400	81	76.00	53	22	17	5	2.3	M6	8	図1
MS35B25 D18	1,400	81	76.00	53	22	18	6	2.8	M6	8	図1
MS35B25 D19	1,440	81	76.00	53	22	19	6	2.8	M6	8	図1
MS35B25 D20	1,440	81	76.00	53	22	20	6	2.8	M6	8	図1
MS35B25 D22	1,440	81	76.00	53	22	22	6	2.8	M6	8	図1
MS35B25 D25	1,640	81	76.00	53	22	25	8	3.3	M8	8	図1
MS35B25 D28	1,640	81	76.00	53	22	28	8	3.3	M8	8	図1
MS35B25 D30	1,640	81	76.00	53	22	30	8	3.3	M8	8	図1
MS35B26 D15	1,440	84	79.02	53	22	15	5	2.3	M6	8	図1
MS35B26 D16	1,440	84	79.02	53	22	16	5	2.3	M6	8	図1
MS35B26 D17	1,440	84	79.02	53	22	17	5	2.3	M6	8	図1
MS35B26 D18	1,490	84	79.02	53	22	18	6	2.8	M6	8	図1
MS35B26 D19	1,490	84	79.02	53	22	19	6	2.8	M6	8	図1
MS35B26 D20	1,490	84	79.02	53	22	20	6	2.8	M6	8	図1
MS35B26 D22	1,710	84	79.02	53	22	22	6	2.8	M6	8	図1
MS35B26 D25	1,710	84	79.02	53	22	25	8	3.3	M8	8	図1
MS35B26 D28	1,710	84	79.02	53	22	28	8	3.3	M8	8	図1
MS35B26 D30	1,710	84	79.02	53	22	30	8	3.3	M8	8	図1
MS35B27 D15	1,490	87	82.05	53	22	15	5	2.3	M6	8	図1
MS35B27 D16	1,490	87	82.05	53	22	16	5	2.3	M6	8	図1
MS35B27 D17	1,550	87	82.05	53	22	17	5	2.3	M6	8	図1
MS35B27 D18	1,550	87	82.05	53	22	18	6	2.8	M6	8	図1
MS35B27 D19	1,550	87	82.05	53	22	19	6	2.8	M6	8	図1
MS35B27 D20	1,550	87	82.05	53	22	20	6	2.8	M6	8	図1
MS35B27 D22	1,760	87	82.05	53	22	22	6	2.8	M6	8	図1
MS35B27 D25	1,760	87	82.05	53	22	25	8	3.3	M8	8	図1
MS35B27 D28	1,760	87	82.05	53	22	28	8	3.3	M8	8	図1
MS35B27 D30	1,760	87	82.05	53	22	30	8	3.3	M8	8	図1



## ● MS35B

品番	価格	外径 DO	ピッチ径 DP	ボス寸法		穴径 d(H7)	キー溝寸法		セットスクリュー		
				BD	BL		W	H	M	A	図
MS35B28 D15	1,490	90	85.07	53	22	15	5	2.3	M6	8	図1
MS35B28 D16	1,490	90	85.07	53	22	16	5	2.3	M6	8	図1
MS35B28 D17	1,550	90	85.07	53	22	17	5	2.3	M6	8	図1
MS35B28 D18	1,550	90	85.07	53	22	18	6	2.8	M6	8	図1
MS35B28 D19	1,550	90	85.07	53	22	19	6	2.8	M6	8	図1
MS35B28 D20	1,550	90	85.07	53	22	20	6	2.8	M6	8	図1
MS35B28 D22	1,760	90	85.07	53	22	22	6	2.8	M6	8	図1
MS35B28 D25	1,760	90	85.07	53	22	25	8	3.3	M8	8	図1
MS35B28 D28	1,760	90	85.07	53	22	28	8	3.3	M8	8	図1
MS35B28 D30	1,760	90	85.07	53	22	30	8	3.3	M8	8	図1
MS35B30 D15	1,550	96	91.12	53	22	15	5	2.3	M6	8	図1
MS35B30 D16	1,550	96	91.12	53	22	16	5	2.3	M6	8	図1
MS35B30 D17	1,550	96	91.12	53	22	17	5	2.3	M6	8	図1
MS35B30 D18	1,550	96	91.12	53	22	18	6	2.8	M6	8	図1
MS35B30 D19	1,550	96	91.12	53	22	19	6	2.8	M6	8	図1
MS35B30 D20	1,550	96	91.12	53	22	20	6	2.8	M6	8	図1
MS35B30 D22	1,760	96	91.12	53	22	22	6	2.8	M6	8	図1
MS35B30 D25	1,760	96	91.12	53	22	25	8	3.3	M8	8	図1
MS35B30 D28	1,950	96	91.12	53	22	28	8	3.3	M8	8	図1
MS35B30 D30	1,950	96	91.12	53	22	30	8	3.3	M8	8	図1
MS35B32 D15	1,640	102	97.18	53	22	15	5	2.3	M6	8	図1
MS35B32 D16	1,640	102	97.18	53	22	16	5	2.3	M6	8	図1
MS35B32 D17	1,640	102	97.18	53	22	17	5	2.3	M6	8	図1
MS35B32 D18	1,640	102	97.18	53	22	18	6	2.8	M6	8	図1
MS35B32 D19	1,640	102	97.18	53	22	19	6	2.8	M6	8	図1
MS35B32 D20	1,640	102	97.18	53	22	20	6	2.8	M6	8	図1
MS35B32 D22	1,850	102	97.18	53	22	22	6	2.8	M6	8	図1
MS35B32 D25	1,850	102	97.18	53	22	25	8	3.3	M8	8	図1
MS35B32 D28	2,050	102	97.18	53	22	28	8	3.3	M8	8	図1
MS35B32 D30	2,050	102	97.18	53	22	30	8	3.3	M8	8	図1
MS35B34 D20	1,850	108	103.23	53	22	20	6	2.8	M6	8	図1
MS35B34 D22	1,950	108	103.23	53	22	22	6	2.8	M6	8	図1
MS35B34 D25	1,950	108	103.23	53	22	25	8	3.3	M8	8	図1
MS35B34 D28	2,160	108	103.23	53	22	28	8	3.3	M8	8	図1
MS35B34 D30	2,160	108	103.23	53	22	30	8	3.3	M8	8	図1
MS35B35 D20	1,850	111	106.26	53	22	20	6	2.8	M6	8	図1
MS35B35 D22	1,950	111	106.26	53	22	22	6	2.8	M6	8	図1
MS35B35 D25	1,950	111	106.26	53	22	25	8	3.3	M8	8	図1
MS35B35 D28	2,160	111	106.26	53	22	28	8	3.3	M8	8	図1
MS35B35 D30	2,160	111	106.26	53	22	30	8	3.3	M8	8	図1
MS35B36 D20	1,950	114	109.29	53	22	20	6	2.8	M6	8	図1
MS35B36 D22	2,050	114	109.29	53	22	22	6	2.8	M6	8	図1



## ● MS35B・MS40B

品番	価格	外径 DO	ピッチ径 DP	ボス寸法		穴径 d(H7)	キー溝寸法		セットスクリュー		
				BD	BL		W	H	M	A	図
MS35B36 D25	2,050	114	109.29	53	22	25	8	3.3	M8	8	図1
MS35B36 D28	2,280	114	109.29	53	22	28	8	3.3	M8	8	図1
MS35B36 D30	2,280	114	109.29	53	22	30	8	3.3	M8	8	図1
MS35B38 D20	2,050	120	115.34	63	25	20	6	2.8	M6	8	図1
MS35B38 D22	2,050	120	115.34	63	25	22	6	2.8	M6	8	図1
MS35B38 D25	2,050	120	115.34	63	25	25	8	3.3	M8	8	図1
MS35B38 D28	2,280	120	115.34	63	25	28	8	3.3	M8	8	図1
MS35B38 D30	2,280	120	115.34	63	25	30	8	3.3	M8	8	図1
MS35B38 D32	2,360	120	115.34	63	25	32	10	3.3	M8	8	図1
MS35B38 D35	2,360	120	115.34	63	25	35	10	3.3	M8	8	図1
MS35B40 D20	2,050	126	121.40	63	25	20	6	2.8	M6	8	図1
MS35B40 D22	2,050	126	121.40	63	25	22	6	2.8	M6	8	図1
MS35B40 D25	2,050	126	121.40	63	25	25	8	3.3	M8	8	図1
MS35B40 D28	2,280	126	121.40	63	25	28	8	3.3	M8	8	図1
MS35B40 D30	2,280	126	121.40	63	25	30	8	3.3	M8	8	図1
MS35B40 D32	2,470	126	121.40	63	25	32	10	3.3	M8	8	図1
MS35B40 D35	2,470	126	121.40	63	25	35	10	3.3	M8	8	図1
MS40B9 D12	1,080	42	37.13	# 28	22	12	4	1.8	M5	6	図1
MS40B9 D14	1,130	42	37.13	# 28	22	14	5	2.3	M6	6	図1
MS40B9 D15	1,130	42	37.13	# 28	22	15	5	2.3	M6	6	図1
MS40B10 D12	1,080	46	41.10	# 32	22	12	4	1.8	M5	6	図1
MS40B10 D14	1,080	46	41.10	# 32	22	14	5	2.3	M6	6	図1
MS40B10 D15	1,080	46	41.10	* 32	22	15	5	2.3	M6	5	図1
MS40B10 D16	1,160	46	41.10	* 32	22	16	5	2.3	M6	5	図1
MS40B10 D17	1,160	46	41.10	* 32	22	17	5	2.3	M6	5	図1
MS40B10 D18	1,190	46	41.10	# 32	22	18	6	2.8	M6	6	図1
MS40B11 D12	1,190	50	45.08	# 36	22	12	4	1.8	M5	6	図1
MS40B11 D14	1,190	50	45.08	# 36	22	14	5	2.3	M6	6	図1
MS40B11 D15	1,190	50	45.08	# 36	22	15	5	2.3	M6	6	図1
MS40B11 D16	1,190	50	45.08	# 36	22	16	5	2.3	M6	6	図1
MS40B11 D17	1,190	50	45.08	# 36	22	17	5	2.3	M6	6	図1
MS40B11 D18	1,220	50	45.08	* 36	22	18	6	2.8	M6	5	図1
MS40B11 D19	1,250	50	45.08	# 36	22	19	6	2.8	M6	6	図1
MS40B11 D20	1,250	50	45.08	# 36	22	20	6	2.8	M6	6	図1
MS40B12 D12	1,190	55	49.07	# 40	22	12	4	1.8	M5	6	図1
MS40B12 D14	1,190	55	49.07	# 40	22	14	5	2.3	M6	6	図1
MS40B12 D15	1,190	55	49.07	* 40	22	15	5	2.3	M6	5	図1
MS40B12 D16	1,190	55	49.07	* 40	22	16	5	2.3	M6	5	図1
MS40B12 D17	1,190	55	49.07	* 40	22	17	5	2.3	M6	5	図1
MS40B12 D18	1,190	55	49.07	* 40	22	18	6	2.8	M6	5	図1
MS40B12 D19	1,190	55	49.07	* 40	22	19	6	2.8	M6	5	図1
MS40B12 D20	1,190	55	49.07	* 40	22	20	6	2.8	M6	5	図1
MS40B12 D22	1,300	55	49.07	* 40	22	22	6	2.8	M6	5	図1

\* / #印はボス径に溝があります。

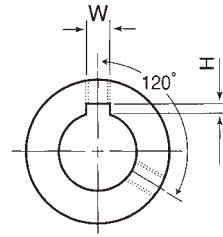
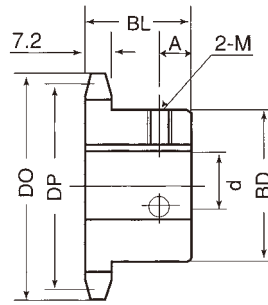
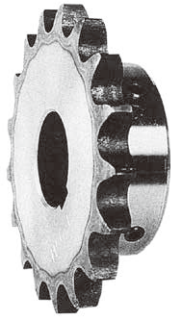


図1

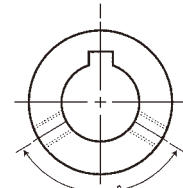


図2

## ● MS40B

品番	価格	外径 DO	ピッチ径 DP	ボス寸法		穴径 d(H7)	キー溝寸法		セットスクリュー		
				BD	BL		W	H	M	A	図
MS40B13 D12	1,250	59	53.07	37	22	12	4	1.8	M5	7	図1
MS40B13 D14	1,250	59	53.07	37	22	14	5	2.3	M6	7	図1
MS40B13 D15	1,250	59	53.07	37	22	15	5	2.3	M6	6	図1
MS40B13 D16	1,250	59	53.07	37	22	16	5	2.3	M6	7	図1
MS40B13 D17	1,250	59	53.07	37	22	17	5	2.3	M6	7	図1
MS40B13 D18	1,250	59	53.07	37	22	18	6	2.8	M6	6	図1
MS40B13 D19	1,250	59	53.07	37	22	19	6	2.8	M6	6	図1
MS40B13 D20	1,250	59	53.07	37	22	20	6	2.8	M6	6	図1
MS40B13 D22	1,330	59	53.07	37	22	22	6	2.8	M6	7	図1
MS40B13 D24	1,330	59	53.07	37	22	24	8	3.3	M8	7	図2
MS40B13 D25	1,330	59	53.07	37	22	25	8	3.3	M8	6	図2
MS40B14 D12	1,290	63	57.07	42	22	12	4	1.8	M5	7	図1
MS40B14 D14	1,290	63	57.07	42	22	14	5	2.3	M6	7	図1
MS40B14 D15	1,290	63	57.07	42	22	15	5	2.3	M6	6	図1
MS40B14 D16	1,290	63	57.07	42	22	16	5	2.3	M6	7	図1
MS40B14 D17	1,290	63	57.07	42	22	17	5	2.3	M6	7	図1
MS40B14 D18	1,290	63	57.07	42	22	18	6	2.8	M6	6	図1
MS40B14 D19	1,290	63	57.07	42	22	19	6	2.8	M6	7	図1
MS40B14 D20	1,290	63	57.07	42	22	20	6	2.8	M6	6	図1
MS40B14 D22	1,410	63	57.07	42	22	22	6	2.8	M6	6	図1
MS40B14 D24	1,410	63	57.07	42	22	24	8	3.3	M8	6	図1
MS40B14 D25	1,410	63	57.07	42	22	25	8	3.3	M8	6	図1
MS40B14 D28	1,410	63	57.07	42	22	28	8	3.3	M8	6	図2
MS40B15 D12	1,290	67	61.08	46	22	12	4	1.8	M5	7	図1
MS40B15 D14	1,290	67	61.08	46	22	14	5	2.3	M6	7	図1
MS40B15 D15	1,290	67	61.08	46	22	15	5	2.3	M6	6	図1
MS40B15 D16	1,290	67	61.08	46	22	16	5	2.3	M6	6	図1
MS40B15 D17	1,290	67	61.08	46	22	17	5	2.3	M6	7	図1
MS40B15 D18	1,290	67	61.08	46	22	18	6	2.8	M6	6	図1
MS40B15 D19	1,290	67	61.08	46	22	19	6	2.8	M6	6	図1
MS40B15 D20	1,290	67	61.08	46	22	20	6	2.8	M6	6	図1
MS40B15 D22	1,410	67	61.08	46	22	22	6	2.8	M6	6	図1
MS40B15 D24	1,410	67	61.08	46	22	24	8	3.3	M8	6	図1
MS40B15 D25	1,410	67	61.08	46	22	25	8	3.3	M8	6	図1
MS40B15 D28	1,410	67	61.08	46	22	28	8	3.3	M8	6	図1
MS40B15 D30	1,410	67	61.08	46	22	30	8	3.3	M8	6	図1
MS40B16 D14	1,290	71	65.10	50	22	14	5	2.3	M6	7	図1
MS40B16 D15	1,290	71	65.10	50	22	15	5	2.3	M6	6	図1
MS40B16 D16	1,290	71	65.10	50	22	16	5	2.3	M6	6	図1
MS40B16 D17	1,290	71	65.10	50	22	17	5	2.3	M6	7	図1
MS40B16 D18	1,290	71	65.10	50	22	18	6	2.8	M6	6	図1
MS40B16 D19	1,290	71	65.10	50	22	19	6	2.8	M6	6	図1

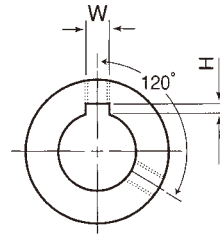
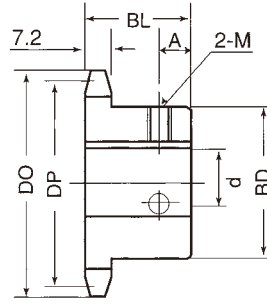
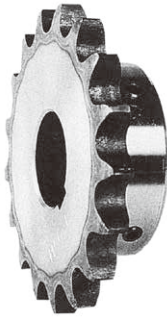


図1

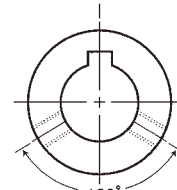


図2

● MS40B

品番	価格	外径 DO	ピッチ径 DP	ボス寸法		穴径 d(H7)	キー溝寸法		セットスクリュー		
				BD	BL		W	H	M	A	図
MS40B16 D20	1,290	71	65.10	50	22	20	6	2.8	M6	6	図1
MS40B16 D22	1,460	71	65.10	50	22	22	6	2.8	M6	6	図1
MS40B16 D24	1,460	71	65.10	50	22	24	8	3.3	M8	7	図1
MS40B16 D25	1,460	71	65.10	50	22	25	8	3.3	M8	6	図1
MS40B16 D28	1,460	71	65.10	50	22	28	8	3.3	M8	6	図1
MS40B16 D30	1,460	71	65.10	50	22	30	8	3.3	M8	6	図1
MS40B16 D32	1,600	71	65.10	50	22	32	10	3.3	M8	6	図1
MS40B17 D14	1,330	75	69.12	54	22	14	5	2.3	M6	7	図1
MS40B17 D15	1,330	75	69.12	54	22	15	5	2.3	M6	7	図1
MS40B17 D16	1,330	75	69.12	54	22	16	5	2.3	M6	7	図1
MS40B17 D17	1,330	75	69.12	54	22	17	5	2.3	M6	7	図1
MS40B17 D18	1,330	75	69.12	54	22	18	6	2.8	M6	7	図1
MS40B17 D19	1,330	75	69.12	54	22	19	6	2.8	M6	7	図1
MS40B17 D20	1,330	75	69.12	54	22	20	6	2.8	M6	6	図1
MS40B17 D22	1,550	75	69.12	54	22	22	6	2.8	M6	7	図1
MS40B17 D24	1,550	75	69.12	54	22	24	8	3.3	M8	7	図1
MS40B17 D25	1,550	75	69.12	54	22	25	8	3.3	M8	6	図1
MS40B17 D28	1,550	75	69.12	54	22	28	8	3.3	M8	7	図1
MS40B17 D30	1,550	75	69.12	54	22	30	8	3.3	M8	7	図1
MS40B17 D32	1,720	75	69.12	54	22	32	10	3.3	M8	6	図1
MS40B17 D35	1,760	75	69.12	54	22	35	10	3.3	M8	7	図1
MS40B18 D14	1,440	79	73.14	57	22	14	5	2.3	M6	7	図1
MS40B18 D15	1,440	79	73.14	57	22	15	5	2.3	M6	6	図1
MS40B18 D16	1,440	79	73.14	57	22	16	5	2.3	M6	6	図1
MS40B18 D17	1,440	79	73.14	57	22	17	5	2.3	M6	7	図1
MS40B18 D18	1,440	79	73.14	57	22	18	6	2.8	M6	7	図1
MS40B18 D19	1,440	79	73.14	57	22	19	6	2.8	M6	6	図1
MS40B18 D20	1,440	79	73.14	57	22	20	6	2.8	M6	6	図1
MS40B18 D22	1,600	79	73.14	57	22	22	6	2.8	M6	6	図1
MS40B18 D24	1,600	79	73.14	57	22	24	8	3.3	M8	7	図1
MS40B18 D25	1,600	79	73.14	57	22	25	8	3.3	M8	6	図1
MS40B18 D28	1,600	79	73.14	57	22	28	8	3.3	M8	6	図1
MS40B18 D30	1,600	79	73.14	57	22	30	8	3.3	M8	6	図1
MS40B18 D32	1,760	79	73.14	57	22	32	10	3.3	M8	6	図1
MS40B18 D35	1,800	79	73.14	57	22	35	10	3.3	M8	7	図1
MS40B18 D40	1,800	79	73.14	57	22	40	12	3.3	M8	7	図2
MS40B19 D14	1,490	83	77.16	62	22	14	5	2.3	M6	7	図1
MS40B19 D15	1,490	83	77.16	62	22	15	5	2.3	M6	7	図1
MS40B19 D16	1,490	83	77.16	62	22	16	5	2.3	M6	7	図1
MS40B19 D17	1,490	83	77.16	62	22	17	5	2.3	M6	7	図1
MS40B19 D18	1,490	83	77.16	62	22	18	6	2.8	M6	7	図1
MS40B19 D19	1,490	83	77.16	62	22	19	6	2.8	M6	7	図1



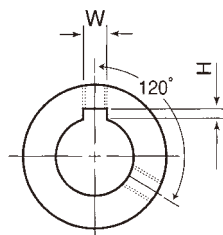
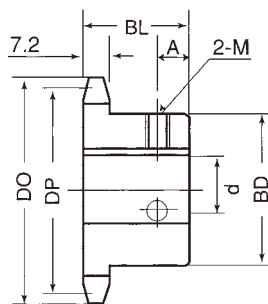
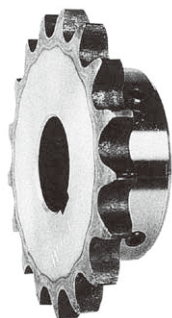


図1

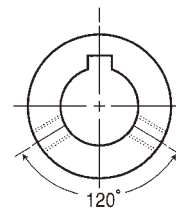


図2

## ● MS40B

品番	価格	外径 DO	ピッチ径 DP	ボス寸法		穴径 d(H7)	キー溝寸法		セットスクリュー		
				BD	BL		W	H	M	A	図
MS40B19 D20	1,490	83	77.16	62	22	20	6	2.8	M6	6	図1
MS40B19 D22	1,800	83	77.16	62	22	22	6	2.8	M6	7	図1
MS40B19 D24	1,800	83	77.16	62	22	24	8	3.3	M8	7	図1
MS40B19 D25	1,800	83	77.16	62	22	25	8	3.3	M8	6	図1
MS40B19 D28	1,800	83	77.16	62	22	28	8	3.3	M8	6	図1
MS40B19 D30	1,800	83	77.16	62	22	30	8	3.3	M8	7	図1
MS40B19 D32	1,950	83	77.16	62	22	32	10	3.3	M8	7	図1
MS40B19 D35	1,950	83	77.16	62	22	35	10	3.3	M8	7	図1
MS40B19 D40	1,950	83	77.16	62	22	40	12	3.3	M8	7	図1
MS40B20 D14	1,600	87	81.18	67	25	14	5	2.3	M6	8	図1
MS40B20 D15	1,600	87	81.18	67	25	15	5	2.3	M6	7	図1
MS40B20 D16	1,600	87	81.18	67	25	16	5	2.3	M6	7	図1
MS40B20 D17	1,600	87	81.18	67	25	17	5	2.3	M6	8	図1
MS40B20 D18	1,600	87	81.18	67	25	18	6	2.8	M6	7	図1
MS40B20 D19	1,600	87	81.18	67	25	19	6	2.8	M6	7	図1
MS40B20 D20	1,600	87	81.18	67	25	20	6	2.8	M6	7	図1
MS40B20 D22	1,800	87	81.18	67	25	22	6	2.8	M6	7	図1
MS40B20 D24	1,800	87	81.18	67	25	24	8	3.3	M8	8	図1
MS40B20 D25	1,800	87	81.18	67	25	25	8	3.3	M8	7	図1
MS40B20 D28	1,800	87	81.18	67	25	28	8	3.3	M8	7	図1
MS40B20 D30	1,800	87	81.18	67	25	30	8	3.3	M8	7	図1
MS40B20 D32	1,950	87	81.18	67	25	32	10	3.3	M8	8	図1
MS40B20 D35	1,950	87	81.18	67	25	35	10	3.3	M8	7	図1
MS40B20 D40	1,950	87	81.18	67	25	40	12	3.3	M8	8	図1
MS40B20 D42	1,950	87	81.18	67	25	42	12	3.3	M8	8	図1
MS40B21 D14	1,910	91	85.21	71	25	14	5	2.3	M6	8	図1
MS40B21 D15	1,910	91	85.21	71	25	15	5	2.3	M6	8	図1
MS40B21 D16	1,910	91	85.21	71	25	16	5	2.3	M6	8	図1
MS40B21 D17	1,910	91	85.21	71	25	17	5	2.3	M6	8	図1
MS40B21 D18	1,910	91	85.21	71	25	18	6	2.8	M6	8	図1
MS40B21 D19	1,910	91	85.21	71	25	19	6	2.8	M6	8	図1
MS40B21 D20	1,910	91	85.21	71	25	20	6	2.8	M6	8	図1
MS40B21 D22	1,910	91	85.21	71	25	22	6	2.8	M6	7	図1
MS40B21 D24	1,910	91	85.21	71	25	24	8	3.3	M8	8	図1
MS40B21 D25	1,910	91	85.21	71	25	25	8	3.3	M8	8	図1
MS40B21 D28	1,910	91	85.21	71	25	28	8	3.3	M8	8	図1
MS40B21 D30	1,910	91	85.21	71	25	30	8	3.3	M8	8	図1
MS40B21 D32	2,010	91	85.21	71	25	32	10	3.3	M8	8	図1
MS40B21 D35	2,010	91	85.21	71	25	35	10	3.3	M8	8	図1
MS40B21 D40	2,010	91	85.21	71	25	40	12	3.3	M8	8	図1

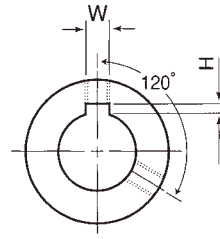
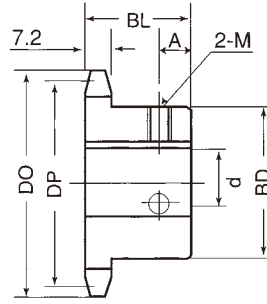
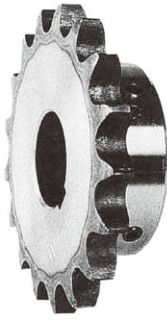


図1

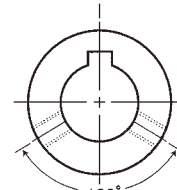


図2

● MS40B

品番	価格	外径 DO	ピッチ径 DP	ボス寸法		穴径 d(H7)	キー溝寸法		セットスクリュー		
				BD	BL		W	H	M	A	図
MS40B22 D14	1,950	95	89.24	75	25	14	5	2.3	M6	8	図1
MS40B22 D15	1,950	95	89.24	75	25	15	5	2.3	M6	8	図1
MS40B22 D16	1,950	95	89.24	75	25	16	5	2.3	M6	8	図1
MS40B22 D17	1,950	95	89.24	75	25	17	5	2.3	M6	8	図1
MS40B22 D18	1,950	95	89.24	75	25	18	6	2.8	M6	8	図1
MS40B22 D19	1,950	95	89.24	75	25	19	6	2.8	M6	8	図1
MS40B22 D20	1,950	95	89.24	75	25	20	6	2.8	M6	7	図1
MS40B22 D22	1,950	95	89.24	75	25	22	6	2.8	M6	8	図1
MS40B22 D24	1,950	95	89.24	75	25	24	8	3.3	M8	8	図1
MS40B22 D25	1,950	95	89.24	75	25	25	8	3.3	M8	7	図1
MS40B22 D28	1,950	95	89.24	75	25	28	8	3.3	M8	8	図1
MS40B22 D30	1,950	95	89.24	75	25	30	8	3.3	M8	8	図1
MS40B22 D32	2,050	95	89.24	75	25	32	10	3.3	M8	8	図1
MS40B22 D35	2,050	95	89.24	75	25	35	10	3.3	M8	8	図1
MS40B22 D40	2,050	95	89.24	75	25	40	12	3.3	M8	8	図1
MS40B23 D14	1,950	99	93.27	77	25	14	5	2.3	M6	8	図1
MS40B23 D15	1,950	99	93.27	77	25	15	5	2.3	M6	8	図1
MS40B23 D16	1,950	99	93.27	77	25	16	5	2.3	M6	8	図1
MS40B23 D17	1,950	99	93.27	77	25	17	5	2.3	M6	8	図1
MS40B23 D18	1,950	99	93.27	77	25	18	6	2.8	M6	8	図1
MS40B23 D19	1,950	99	93.27	77	25	19	6	2.8	M6	8	図1
MS40B23 D20	1,950	99	93.27	77	25	20	6	2.8	M6	8	図1
MS40B23 D22	1,950	99	93.27	77	25	22	6	2.8	M6	8	図1
MS40B23 D24	1,950	99	93.27	77	25	24	8	3.3	M8	8	図1
MS40B23 D25	1,950	99	93.27	77	25	25	8	3.3	M8	7	図1
MS40B23 D28	1,950	99	93.27	77	25	28	8	3.3	M8	8	図1
MS40B23 D30	1,950	99	93.27	77	25	30	8	3.3	M8	8	図1
MS40B23 D32	2,050	99	93.27	77	25	32	10	3.3	M8	8	図1
MS40B23 D35	2,050	99	93.27	77	25	35	10	3.3	M8	8	図1
MS40B23 D40	2,050	99	93.27	77	25	40	12	3.3	M8	8	図1
MS40B24 D14	1,950	103	97.30	63	25	14	5	2.3	M6	8	図1
MS40B24 D15	1,950	103	97.30	63	25	15	5	2.3	M6	8	図1
MS40B24 D16	1,950	103	97.30	63	25	16	5	2.3	M6	8	図1
MS40B24 D17	1,950	103	97.30	63	25	17	5	2.3	M6	8	図1
MS40B24 D18	1,950	103	97.30	63	25	18	6	2.8	M6	8	図1
MS40B24 D19	1,950	103	97.30	63	25	19	6	2.8	M6	8	図1
MS40B24 D20	1,950	103	97.30	63	25	20	6	2.8	M6	7	図1
MS40B24 D22	1,950	103	97.30	63	25	22	6	2.8	M6	8	図1
MS40B24 D24	1,950	103	97.30	63	25	24	8	3.3	M8	7	図1
MS40B24 D25	1,950	103	97.30	63	25	25	8	3.3	M8	7	図1
MS40B24 D28	2,010	103	97.30	63	25	28	8	3.3	M8	7	図1
MS40B24 D30	2,010	103	97.30	63	25	30	8	3.3	M8	7	図1

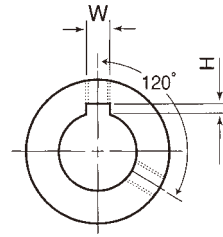
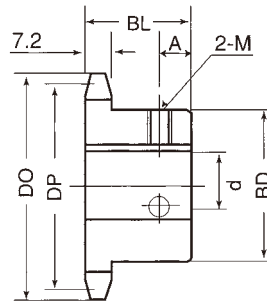
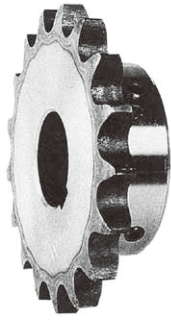


図1

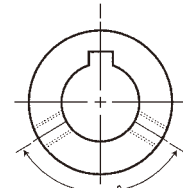


図2

## ● MS40B

品番	価格	外径 DO	ピッチ径 DP	ボス寸法		穴径 d(H7)	キー溝寸法		セットスクリュー		
				BD	BL		W	H	M	A	図
MS40B24 D32	2,050	103	97.30	63	25	32	10	3.3	M8	8	図1
MS40B24 D35	2,050	103	97.30	63	25	35	10	3.3	M8	8	図1
MS40B24 D40	2,050	103	97.30	63	25	40	12	3.3	M8	8	図1
MS40B24 D42	2,210	103	97.30	63	25	42	12	3.3	M8	8	図1
MS40B25 D14	1,950	108	101.33	63	25	14	5	2.3	M6	8	図1
MS40B25 D17	1,950	108	101.33	63	25	17	5	2.3	M6	8	図1
MS40B25 D18	1,950	108	101.33	63	25	18	6	2.8	M6	8	図1
MS40B25 D19	1,950	108	101.33	63	25	19	6	2.8	M6	8	図1
MS40B25 D20	1,950	108	101.33	63	25	20	6	2.8	M6	8	図1
MS40B25 D22	1,950	108	101.33	63	25	22	6	2.8	M6	7	図1
MS40B25 D24	1,950	108	101.33	63	25	24	8	3.3	M8	8	図1
MS40B25 D25	1,950	108	101.33	63	25	25	8	3.3	M8	7	図1
MS40B25 D28	2,010	108	101.33	63	25	28	8	3.3	M8	7	図1
MS40B25 D30	2,050	108	101.33	63	25	30	8	3.3	M8	8	図1
MS40B25 D32	2,050	108	101.33	63	25	32	10	3.3	M8	8	図1
MS40B25 D35	2,050	108	101.33	63	25	35	10	3.3	M8	8	図1
MS40B25 D40	2,050	108	101.33	63	25	40	12	3.3	M8	8	図1
MS40B26 D18	2,010	112	105.36	63	25	18	6	2.8	M6	8	図1
MS40B26 D19	2,010	112	105.36	63	25	19	6	2.8	M6	8	図1
MS40B26 D20	2,010	112	105.36	63	25	20	6	2.8	M6	8	図1
MS40B26 D22	2,010	112	105.36	63	25	22	6	2.8	M6	8	図1
MS40B26 D24	2,010	112	105.36	63	25	24	8	3.3	M8	8	図1
MS40B26 D25	2,010	112	105.36	63	25	25	8	3.3	M8	7	図1
MS40B26 D28	2,010	112	105.36	63	25	28	8	3.3	M8	8	図1
MS40B26 D30	2,010	112	105.36	63	25	30	8	3.3	M8	8	図1
MS40B26 D32	2,280	112	105.36	63	25	32	10	3.3	M8	8	図1
MS40B26 D35	2,280	112	105.36	63	25	35	10	3.3	M8	8	図1
MS40B26 D40	2,280	112	105.36	63	25	40	12	3.3	M8	8	図1
MS40B27 D20	2,110	116	109.40	63	25	20	6	2.8	M6	8	図1
MS40B27 D22	2,110	116	109.40	63	25	22	6	2.8	M6	8	図1
MS40B27 D24	2,110	116	109.40	63	25	24	8	3.3	M8	8	図1
MS40B27 D25	2,110	116	109.40	63	25	25	8	3.3	M8	8	図1
MS40B27 D28	2,110	116	109.40	63	25	28	8	3.3	M8	8	図1
MS40B27 D30	2,110	116	109.40	63	25	30	8	3.3	M8	8	図1
MS40B27 D32	2,320	116	109.40	63	25	32	10	3.3	M8	8	図1
MS40B27 D35	2,320	116	109.40	63	25	35	10	3.3	M8	8	図1
MS40B27 D40	2,320	116	109.40	63	25	40	12	3.3	M8	8	図1
MS40B28 D20	2,160	120	113.43	63	25	20	6	2.8	M6	8	図1
MS40B28 D22	2,160	120	113.43	63	25	22	6	2.8	M6	8	図1
MS40B28 D24	2,160	120	113.43	63	25	24	8	3.3	M8	8	図1
MS40B28 D25	2,160	120	113.43	63	25	25	8	3.3	M8	8	図1
MS40B28 D28	2,160	120	113.43	63	25	28	8	3.3	M8	8	図1

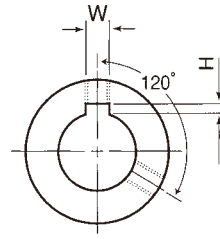
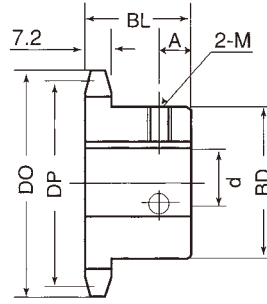
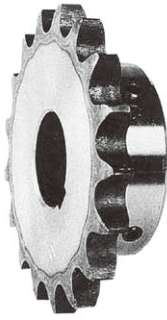


図1

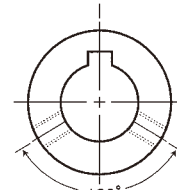
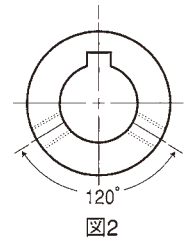
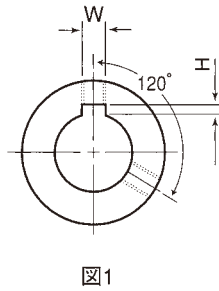
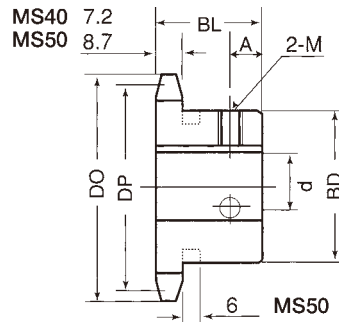
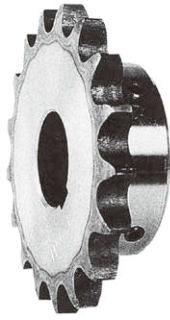


図2

● MS40B

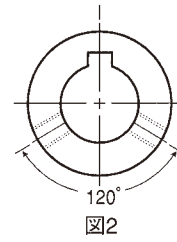
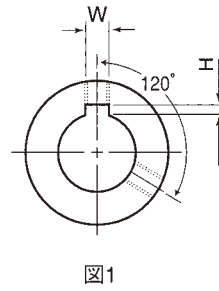
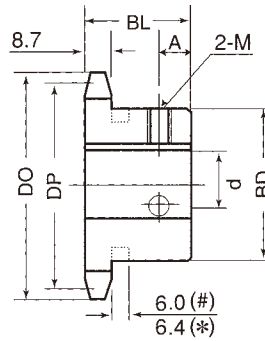
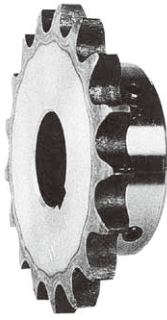
品番	価格	外径 DO	ピッチ径 DP	ボス寸法		穴径 d(H7)	キー溝寸法		セットスクリュー		
				BD	BL		W	H	M	A	図
MS40B28 D30	2,160	120	113.43	63	25	30	8	3.3	M8	8	図1
MS40B28 D32	2,360	120	113.43	63	25	32	10	3.3	M8	8	図1
MS40B28 D35	2,360	120	113.43	63	25	35	10	3.3	M8	8	図1
MS40B28 D40	2,360	120	113.43	63	25	40	12	3.3	M8	8	図1
MS40B29 D25	2,280	124	117.46	63	25	25	8	3.3	M8	8	図1
MS40B30 D20	2,210	128	121.50	63	25	20	6	2.8	M6	8	図1
MS40B30 D22	2,210	128	121.50	63	25	22	6	2.8	M6	8	図1
MS40B30 D24	2,210	128	121.50	63	25	24	8	3.3	M8	8	図1
MS40B30 D25	2,210	128	121.50	63	25	25	8	3.3	M8	7	図1
MS40B30 D28	2,210	128	121.50	63	25	28	8	3.3	M8	8	図1
MS40B30 D30	2,210	128	121.50	63	25	30	8	3.3	M8	7	図1
MS40B30 D32	2,430	128	121.50	63	25	32	10	3.3	M8	8	図1
MS40B30 D35	2,430	128	121.50	63	25	35	10	3.3	M8	8	図1
MS40B30 D40	2,430	128	121.50	63	25	40	12	3.3	M8	8	図1
MS40B32 D20	2,520	136	129.57	68	28	20	6	2.8	M6	10	図1
MS40B32 D22	2,520	136	129.57	68	28	22	6	2.8	M6	10	図1
MS40B32 D24	2,520	136	129.57	68	28	24	8	3.3	M8	10	図1
MS40B32 D25	2,520	136	129.57	68	28	25	8	3.3	M8	10	図1
MS40B32 D28	2,520	136	129.57	68	28	28	8	3.3	M8	10	図1
MS40B32 D30	2,520	136	129.57	68	28	30	8	3.3	M8	10	図1
MS40B32 D32	2,630	136	129.57	68	28	32	10	3.3	M8	10	図1
MS40B32 D35	2,630	136	129.57	68	28	35	10	3.3	M8	10	図1
MS40B32 D40	2,630	136	129.57	68	28	40	12	3.3	M8	10	図1
MS40B34 D20	2,630	145	137.64	68	28	20	6	2.8	M6	10	図1
MS40B34 D22	2,630	145	137.64	68	28	22	6	2.8	M6	10	図1
MS40B34 D24	2,630	145	137.64	68	28	24	8	3.3	M8	10	図1
MS40B34 D25	2,630	145	137.64	68	28	25	8	3.3	M8	10	図1
MS40B34 D28	2,630	145	137.64	68	28	28	8	3.3	M8	10	図1
MS40B34 D30	2,630	145	137.64	68	28	30	8	3.3	M8	10	図1
MS40B34 D32	2,830	145	137.64	68	28	32	10	3.3	M8	10	図1
MS40B34 D35	2,830	145	137.64	68	28	35	10	3.3	M8	10	図1
MS40B34 D40	2,830	145	137.64	68	28	40	12	3.3	M8	10	図1
MS40B35 D20	2,630	149	141.68	68	28	20	6	2.8	M6	10	図1
MS40B35 D22	2,630	149	141.68	68	28	22	6	2.8	M6	10	図1
MS40B35 D24	2,630	149	141.68	68	28	24	8	3.3	M8	10	図1
MS40B35 D25	2,630	149	141.68	68	28	25	8	3.3	M8	10	図1
MS40B35 D28	2,630	149	141.68	68	28	28	8	3.3	M8	10	図1
MS40B35 D30	2,630	149	141.68	68	28	30	8	3.3	M8	10	図1
MS40B35 D32	2,830	149	141.68	68	28	32	10	3.3	M8	10	図1
MS40B35 D35	2,830	149	141.68	68	28	35	10	3.3	M8	10	図1
MS40B35 D40	2,830	149	141.68	68	28	40	12	3.3	M8	10	図1



● MS40B・MS50B

品番	価格	外径 DO	ピッチ径 DP	ボス寸法		穴径 d(H7)	キー溝寸法		セットスクリュー		
				BD	BL		W	H	M	A	図
MS40B36 D20	2,670	153	145.72	68	28	20	6	2.8	M6	10	図1
MS40B36 D22	2,670	153	145.72	68	28	22	6	2.8	M6	10	図1
MS40B36 D24	2,670	153	145.72	68	28	24	8	3.3	M8	10	図1
MS40B36 D25	2,670	153	145.72	68	28	25	8	3.3	M8	10	図1
MS40B36 D28	2,670	153	145.72	68	28	28	8	3.3	M8	10	図1
MS40B36 D30	2,670	153	145.72	68	28	30	8	3.3	M8	10	図1
MS40B36 D32	2,930	153	145.72	68	28	32	10	3.3	M8	10	図1
MS40B36 D35	2,930	153	145.72	68	28	35	10	3.3	M8	10	図1
MS40B36 D40	2,930	153	145.72	68	28	40	12	3.3	M8	10	図1
MS40B37 D35	2,970	157	149.75	68	28	35	10	3.3	M8	10	図1
MS40B38 D24	2,880	161	153.79	68	28	24	8	3.3	M8	10	図1
MS40B38 D25	2,880	161	153.79	68	28	25	8	3.3	M8	10	図1
MS40B38 D28	2,880	161	153.79	68	28	28	8	3.3	M8	10	図1
MS40B38 D30	2,880	161	153.79	68	28	30	8	3.3	M8	10	図1
MS40B38 D32	2,970	161	153.79	68	28	32	10	3.3	M8	10	図1
MS40B38 D35	2,970	161	153.79	68	28	35	10	3.3	M8	10	図1
MS40B38 D40	2,970	161	153.79	68	28	40	12	3.3	M8	10	図1
MS40B40 D25	3,190	169	161.87	68	28	25	8	3.3	M8	10	図1
MS40B40 D28	3,190	169	161.87	68	28	28	8	3.3	M8	10	図1
MS40B40 D30	3,190	169	161.87	68	28	30	8	3.3	M8	10	図1
MS40B40 D32	3,190	169	161.87	68	28	32	10	3.3	M8	10	図1
MS40B40 D35	3,190	169	161.87	68	28	35	10	3.3	M8	10	図1
MS40B40 D40	3,190	169	161.87	68	28	40	12	3.3	M8	10	図1
MS50B9 D16	1,400	53	46.42	# 34	25	16	5	2.3	M6	6	図1
MS50B9 D17	1,400	53	46.42	# 34	25	17	5	2.3	M6	6	図1
MS50B10 D15	1,400	58	51.37	# 40	25	15	5	2.3	M6	6	図1
MS50B10 D16	1,400	58	51.37	# 40	25	16	5	2.3	M6	6	図1
MS50B10 D17	1,400	58	51.37	# 40	25	17	5	2.3	M6	6	図1
MS50B10 D18	1,400	58	51.37	# 40	25	18	6	2.8	M6	6	図1
MS50B10 D19	1,400	58	51.37	# 40	25	19	6	2.8	M6	6	図1
MS50B10 D20	1,400	58	51.37	# 40	25	20	6	2.8	M6	6	図1
MS50B10 D22	1,550	58	51.37	# 40	25	22	6	2.8	M6	6	図1
MS50B10 D24	1,550	58	51.37	# 40	25	24	8	3.3	M8	6	図1
MS50B10 D25	1,550	58	51.37	# 40	25	25	8	3.3	M8	6	図1
MS50B11 D15	1,440	63	56.35	# 45	25	15	5	2.3	M6	6	図1
MS50B11 D16	1,440	63	56.35	# 45	25	16	5	2.3	M6	6	図1
MS50B11 D17	1,440	63	56.35	# 45	25	17	5	2.3	M6	6	図1
MS50B11 D18	1,440	63	56.35	# 45	25	18	6	2.8	M6	6	図1
MS50B11 D19	1,440	63	56.35	# 45	25	19	6	2.8	M6	6	図1
MS50B11 D20	1,440	63	56.35	# 45	25	20	6	2.8	M6	6	図1
MS50B11 D22	1,640	63	56.35	# 45	25	22	6	2.8	M6	6	図1
MS50B11 D24	1,640	63	56.35	# 45	25	24	8	3.3	M8	6	図1
MS50B11 D25	1,640	63	56.35	# 45	25	25	8	3.3	M8	6	図1

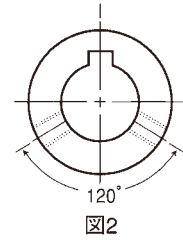
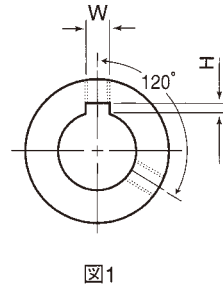
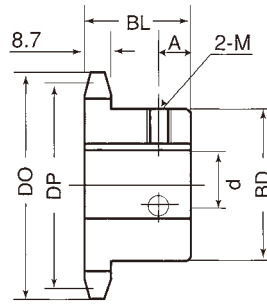
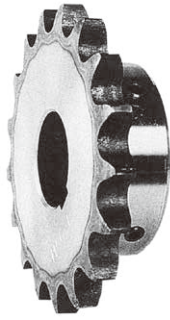
#印はボス径に溝があります。



● MS50B

品番	価格	外径 DO	ピッチ径 DP	ボス寸法		穴径 d(H7)	キー溝寸法		セットスクリュー		
				BD	BL		W	H	M	A	図
MS50B12 D15	1,550	68	61.34	# 50	25	15	5	2.3	M6	6	図1
MS50B12 D16	1,550	68	61.34	# 50	25	16	5	2.3	M6	6	図1
MS50B12 D17	1,550	68	61.34	# 50	25	17	5	2.3	M6	6	図1
MS50B12 D18	1,550	68	61.34	# 50	25	18	6	2.8	M6	6	図1
MS50B12 D19	1,550	68	61.34	# 50	25	19	6	2.8	M6	6	図1
MS50B12 D20	1,550	68	61.34	* 50	25	20	6	2.8	M6	5	図1
MS50B12 D22	1,760	68	61.34	* 50	25	22	6	2.8	M6	5	図1
MS50B12 D24	1,760	68	61.34	* 50	25	24	8	3.3	M8	5	図1
MS50B12 D25	1,760	68	61.34	* 50	25	25	8	3.3	M8	5	図1
MS50B12 D28	1,760	68	61.34	* 50	25	28	8	3.3	M8	5	図1
MS50B12 D30	1,760	68	61.34	* 50	25	30	8	3.3	M8	5	図1
MS50B13 D14	1,640	73	66.34	# 51	25	14	5	2.3	M6	6	図1
MS50B13 D15	1,640	73	66.34	# 51	25	15	5	2.3	M6	6	図1
MS50B13 D16	1,640	73	66.34	# 51	25	16	5	2.3	M6	6	図1
MS50B13 D17	1,640	73	66.34	# 51	25	17	5	2.3	M6	6	図1
MS50B13 D18	1,640	73	66.34	# 51	25	18	6	2.8	M6	6	図1
MS50B13 D19	1,640	73	66.34	# 51	25	19	6	2.8	M6	6	図1
MS50B13 D20	1,640	73	66.34	# 51	25	20	6	2.8	M6	6	図1
MS50B13 D22	1,800	73	66.34	* 51	25	22	6	2.8	M6	5	図1
MS50B13 D24	1,800	73	66.34	# 51	25	24	8	3.3	M8	6	図1
MS50B13 D25	1,800	73	66.34	* 51	25	25	8	3.3	M8	5	図1
MS50B13 D28	1,800	73	66.34	* 51	25	28	8	3.3	M8	5	図1
MS50B13 D30	1,800	73	66.34	# 51	25	30	8	3.3	M8	6	図1
MS50B13 D32	1,800	73	66.34	# 51	25	32	10	3.3	M8	6	図1
MS50B14 D14	1,640	79	71.34	52	25	14	5	2.3	M6	8	図1
MS50B14 D15	1,640	79	71.34	52	25	15	5	2.3	M6	8	図1
MS50B14 D16	1,640	79	71.34	52	25	16	5	2.3	M6	8	図1
MS50B14 D17	1,640	79	71.34	52	25	17	5	2.3	M6	8	図1
MS50B14 D18	1,640	79	71.34	52	25	18	6	2.8	M6	8	図1
MS50B14 D19	1,640	79	71.34	52	25	19	6	2.8	M6	8	図1
MS50B14 D20	1,640	79	71.34	52	25	20	6	2.8	M6	7	図1
MS50B14 D22	1,800	79	71.34	52	25	22	6	2.8	M6	7	図1
MS50B14 D24	1,800	79	71.34	52	25	24	8	3.3	M8	8	図1
MS50B14 D25	1,800	79	71.34	52	25	25	8	3.3	M8	7	図1
MS50B14 D28	1,800	79	71.34	52	25	28	8	3.3	M8	7	図1
MS50B14 D30	1,800	79	71.34	52	25	30	8	3.3	M8	7	図1
MS50B14 D32	1,800	79	71.34	52	25	32	10	3.3	M8	7	図1
MS50B14 D35	1,800	79	71.34	52	25	35	10	3.3	M8	7	図1
MS50B15 D14	1,640	84	76.35	57	25	14	5	2.3	M6	8	図1
MS50B15 D15	1,640	84	76.35	57	25	15	5	2.3	M6	8	図1
MS50B15 D16	1,640	84	76.35	57	25	16	5	2.3	M6	8	図1
MS50B15 D17	1,640	84	76.35	57	25	17	5	2.3	M6	8	図1

\* / #印はボス径に溝があります。



## ● MS50B

品番	価格	外径 DO	ピッチ径 DP	ボス寸法		穴径 d(H7)	キー溝寸法		セットスクリュー		
				BD	BL		W	H	M	A	図
MS50B15 D18	1,640	84	76.35	57	25	18	6	2.8	M6	8	図1
MS50B15 D19	1,640	84	76.35	57	25	19	6	2.8	M6	7	図1
MS50B15 D20	1,640	84	76.35	57	25	20	6	2.8	M6	7	図1
MS50B15 D22	1,760	84	76.35	57	25	22	6	2.8	M6	7	図1
MS50B15 D24	1,760	84	76.35	57	25	24	8	3.3	M8	7	図1
MS50B15 D25	1,760	84	76.35	57	25	25	8	3.3	M8	7	図1
MS50B15 D28	1,760	84	76.35	57	25	28	8	3.3	M8	7	図1
MS50B15 D30	1,760	84	76.35	57	25	30	8	3.3	M8	7	図1
MS50B15 D32	1,760	84	76.35	57	25	32	10	3.3	M8	7	図1
MS50B15 D35	1,760	84	76.35	57	25	35	10	3.3	M8	7	図1
MS50B15 D38	1,760	84	76.35	57	25	38	10	3.3	M8	7	図1
MS50B16 D14	1,850	89	81.37	62	25	14	5	2.3	M6	8	図1
MS50B16 D15	1,850	89	81.37	62	25	15	5	2.3	M6	8	図1
MS50B16 D16	1,850	89	81.37	62	25	16	5	2.3	M6	8	図1
MS50B16 D17	1,850	89	81.37	62	25	17	5	2.3	M6	8	図1
MS50B16 D18	1,850	89	81.37	62	25	18	6	2.8	M6	8	図1
MS50B16 D19	1,850	89	81.37	62	25	19	6	2.8	M6	8	図1
MS50B16 D20	1,850	89	81.37	62	25	20	6	2.8	M6	8	図1
MS50B16 D22	1,850	89	81.37	62	25	22	6	2.8	M6	7	図1
MS50B16 D24	1,850	89	81.37	62	25	24	8	3.3	M8	8	図1
MS50B16 D25	1,850	89	81.37	62	25	25	8	3.3	M8	7	図1
MS50B16 D28	1,850	89	81.37	62	25	28	8	3.3	M8	7	図1
MS50B16 D30	1,850	89	81.37	62	25	30	8	3.3	M8	7	図1
MS50B16 D32	1,850	89	81.37	62	25	32	10	3.3	M8	8	図1
MS50B16 D35	1,850	89	81.37	62	25	35	10	3.3	M8	8	図1
MS50B16 D38	1,950	89	81.37	62	25	38	10	3.3	M8	8	図1
MS50B16 D40	1,950	89	81.37	62	25	40	12	3.3	M8	8	図1
MS50B17 D14	1,850	94	86.39	67	25	14	5	2.3	M6	8	図1
MS50B17 D15	1,850	94	86.39	67	25	15	5	2.3	M6	8	図1
MS50B17 D16	1,850	94	86.39	67	25	16	5	2.3	M6	8	図1
MS50B17 D17	1,850	94	86.39	67	25	17	5	2.3	M6	8	図1
MS50B17 D18	1,850	94	86.39	67	25	18	6	2.8	M6	8	図1
MS50B17 D19	1,850	94	86.39	67	25	19	6	2.8	M6	8	図1
MS50B17 D20	1,850	94	86.39	67	25	20	6	2.8	M6	8	図1
MS50B17 D22	1,950	94	86.39	67	25	22	6	2.8	M6	7	図1
MS50B17 D24	1,950	94	86.39	67	25	24	8	3.3	M8	8	図1
MS50B17 D25	1,950	94	86.39	67	25	25	8	3.3	M8	7	図1
MS50B17 D28	1,950	94	86.39	67	25	28	8	3.3	M8	7	図1
MS50B17 D30	1,950	94	86.39	67	25	30	8	3.3	M8	7	図1
MS50B17 D32	1,950	94	86.39	67	25	32	10	3.3	M8	7	図1
MS50B17 D35	2,010	94	86.39	67	25	35	10	3.3	M8	7	図1
MS50B17 D38	2,050	94	86.39	67	25	38	10	3.3	M8	8	図1
MS50B17 D40	2,050	94	86.39	67	25	40	12	3.3	M8	8	図1

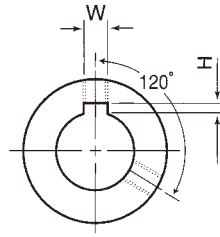
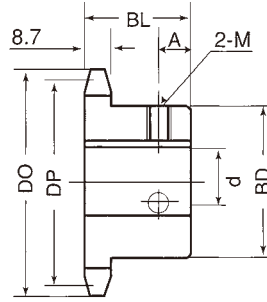
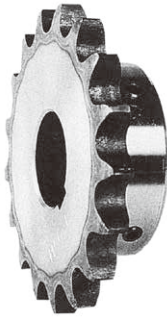


図1

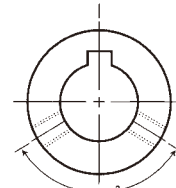
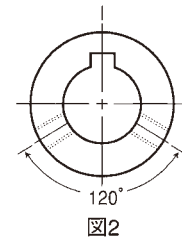
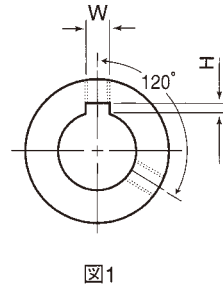
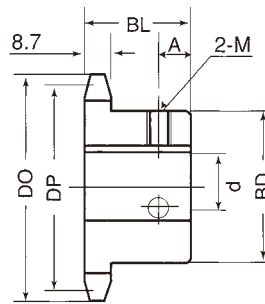
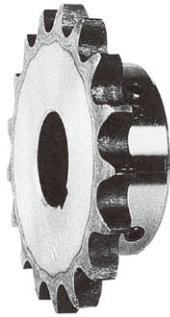


図2

● MS50B

品番	価格	外径 DO	ピッチ径 DP	ボス寸法		穴径 d(H7)	キー溝寸法		セットスクリュー		
				BD	BL		W	H	M	A	図
MS50B18 D14	2,010	99	91.42	72	28	14	5	2.3	M6	9	図1
MS50B18 D15	2,010	99	91.42	72	28	15	5	2.3	M6	9	図1
MS50B18 D16	2,010	99	91.42	72	28	16	5	2.3	M6	9	図1
MS50B18 D17	2,010	99	91.42	72	28	17	5	2.3	M6	9	図1
MS50B18 D18	2,010	99	91.42	72	28	18	6	2.8	M6	9	図1
MS50B18 D19	2,010	99	91.42	72	28	19	6	2.8	M6	8	図1
MS50B18 D20	2,010	99	91.42	72	28	20	6	2.8	M6	9	図1
MS50B18 D22	2,110	99	91.42	72	28	22	6	2.8	M6	8	図1
MS50B18 D24	2,110	99	91.42	72	28	24	8	3.3	M8	9	図1
MS50B18 D25	2,110	99	91.42	72	28	25	8	3.3	M8	8	図1
MS50B18 D28	2,110	99	91.42	72	28	28	8	3.3	M8	8	図1
MS50B18 D30	2,110	99	91.42	72	28	30	8	3.3	M8	8	図1
MS50B18 D32	2,230	99	91.42	72	28	32	10	3.3	M8	8	図1
MS50B18 D35	2,230	99	91.42	72	28	35	10	3.3	M8	8	図1
MS50B18 D38	2,280	99	91.42	72	28	38	10	3.3	M8	9	図1
MS50B18 D40	2,280	99	91.42	72	28	40	12	3.3	M8	8	図1
MS50B18 D45	2,280	99	91.42	72	28	45	14	3.8	M10	9	図1
MS50B19 D14	2,050	104	96.45	73	28	14	5	2.3	M6	9	図1
MS50B19 D15	2,050	104	96.45	73	28	15	5	2.3	M6	9	図1
MS50B19 D16	2,050	104	96.45	73	28	16	5	2.3	M6	9	図1
MS50B19 D17	2,050	104	96.45	73	28	17	5	2.3	M6	9	図1
MS50B19 D18	2,050	104	96.45	73	28	18	6	2.8	M6	9	図1
MS50B19 D19	2,050	104	96.45	73	28	19	6	2.8	M6	9	図1
MS50B19 D20	2,050	104	96.45	73	28	20	6	2.8	M6	9	図1
MS50B19 D22	2,050	104	96.45	73	28	22	6	2.8	M6	9	図1
MS50B19 D24	2,160	104	96.45	73	28	24	8	3.3	M8	9	図1
MS50B19 D25	2,160	104	96.45	73	28	25	8	3.3	M8	8	図1
MS50B19 D28	2,160	104	96.45	73	28	28	8	3.3	M8	8	図1
MS50B19 D30	2,160	104	96.45	73	28	30	8	3.3	M8	9	図1
MS50B19 D32	2,270	104	96.45	73	28	32	10	3.3	M8	8	図1
MS50B19 D35	2,270	104	96.45	73	28	35	10	3.3	M8	8	図1
MS50B19 D38	2,320	104	96.45	73	28	38	10	3.3	M8	9	図1
MS50B19 D40	2,320	104	96.45	73	28	40	12	3.3	M8	9	図1
MS50B19 D45	2,320	104	96.45	73	28	45	14	3.8	M10	9	図1
MS50B20 D14	2,050	109	101.48	73	28	14	5	2.3	M6	9	図1
MS50B20 D15	2,050	109	101.48	73	28	15	5	2.3	M6	9	図1
MS50B20 D16	2,050	109	101.48	73	28	16	5	2.3	M6	9	図1
MS50B20 D17	2,050	109	101.48	73	28	17	5	2.3	M6	9	図1
MS50B20 D18	2,050	109	101.48	73	28	18	6	2.8	M6	9	図1
MS50B20 D19	2,050	109	101.48	73	28	19	6	2.8	M6	8	図1
MS50B20 D20	2,050	109	101.48	73	28	20	6	2.8	M6	8	図1
MS50B20 D22	2,050	109	101.48	73	28	22	6	2.8	M6	8	図1





● MS50B

品番	価格	外径 DO	ピッチ径 DP	ボス寸法		穴径 d(H7)	キー溝寸法		セットスクリュー		
				BD	BL		W	H	M	A	図
MS50B20 D24	2,160	109	101.48	73	28	24	8	3.3	M8	8	図1
MS50B20 D25	2,160	109	101.48	73	28	25	8	3.3	M8	8	図1
MS50B20 D28	2,160	109	101.48	73	28	28	8	3.3	M8	8	図1
MS50B20 D30	2,160	109	101.48	73	28	30	8	3.3	M8	8	図1
MS50B20 D32	2,160	109	101.48	73	28	32	10	3.3	M8	8	図1
MS50B20 D35	2,160	109	101.48	73	28	35	10	3.3	M8	8	図1
MS50B20 D38	2,210	109	101.48	73	28	38	10	3.3	M8	9	図1
MS50B20 D40	2,210	109	101.48	73	28	40	12	3.3	M8	8	図1
MS50B20 D45	2,570	109	101.48	73	28	45	14	3.8	M10	9	図1
MS50B20 D50	2,570	109	101.48	73	28	50	14	3.8	M10	9	図1
MS50B21 D20	2,110	114	106.51	73	28	20	6	2.8	M6	9	図1
MS50B21 D22	2,110	114	106.51	73	28	22	6	2.8	M6	9	図1
MS50B21 D24	2,280	114	106.51	73	28	24	8	3.3	M8	9	図1
MS50B21 D25	2,280	114	106.51	73	28	25	8	3.3	M8	8	図1
MS50B21 D28	2,280	114	106.51	73	28	28	8	3.3	M8	9	図1
MS50B21 D30	2,280	114	106.51	73	28	30	8	3.3	M8	8	図1
MS50B21 D32	2,430	114	106.51	73	28	32	10	3.3	M8	9	図1
MS50B21 D35	2,430	114	106.51	73	28	35	10	3.3	M8	8	図1
MS50B21 D38	2,430	114	106.51	73	28	38	10	3.3	M8	9	図1
MS50B21 D40	2,430	114	106.51	73	28	40	12	3.3	M8	9	図1
MS50B21 D45	2,430	114	106.51	73	28	45	14	3.8	M10	9	図1
MS50B22 D20	2,110	119	111.55	73	28	20	6	2.8	M6	9	図1
MS50B22 D22	2,110	119	111.55	73	28	22	6	2.8	M6	9	図1
MS50B22 D24	2,320	119	111.55	73	28	24	8	3.3	M8	9	図1
MS50B22 D25	2,320	119	111.55	73	28	25	8	3.3	M8	9	図1
MS50B22 D28	2,320	119	111.55	73	28	28	8	3.3	M8	9	図1
MS50B22 D30	2,320	119	111.55	73	28	30	8	3.3	M8	8	図1
MS50B22 D32	2,470	119	111.55	73	28	32	10	3.3	M8	9	図1
MS50B22 D35	2,470	119	111.55	73	28	35	10	3.3	M8	9	図1
MS50B22 D38	2,470	119	111.55	73	28	38	10	3.3	M8	9	図1
MS50B22 D40	2,470	119	111.55	73	28	40	12	3.3	M8	9	図1
MS50B22 D45	2,470	119	111.55	73	28	45	14	3.8	M10	9	図1
MS50B23 D20	2,360	124	116.58	73	28	20	6	2.8	M6	9	図1
MS50B23 D22	2,360	124	116.58	73	28	22	6	2.8	M6	9	図1
MS50B23 D24	2,360	124	116.58	73	28	24	8	3.3	M8	9	図1
MS50B23 D25	2,360	124	116.58	73	28	25	8	3.3	M8	8	図1
MS50B23 D28	2,360	124	116.58	73	28	28	8	3.3	M8	9	図1
MS50B23 D30	2,360	124	116.58	73	28	30	8	3.3	M8	9	図1
MS50B23 D32	2,520	124	116.58	73	28	32	10	3.3	M8	9	図1
MS50B23 D35	2,520	124	116.58	73	28	35	10	3.3	M8	9	図1
MS50B23 D38	2,570	124	116.58	73	28	38	10	3.3	M8	9	図1
MS50B23 D40	2,570	124	116.58	73	28	40	12	3.3	M8	9	図1
MS50B23 D45	2,570	124	116.58	73	28	45	14	3.8	M10	9	図1

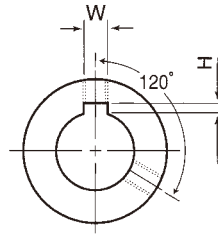
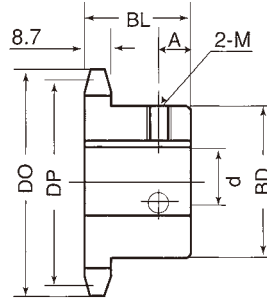
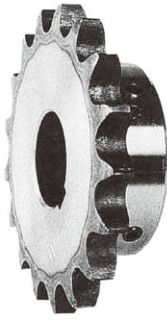


図1

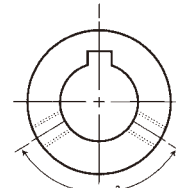


図2

● MS50B

品番	価格	外径 DO	ピッチ径 DP	ボス寸法		穴径 d(H7)	キー溝寸法		セットスクリュー		
				BD	BL		W	H	M	A	図
MS50B24 D20	2,430	129	121.62	73	28	20	6	2.8	M6	9	図1
MS50B24 D22	2,430	129	121.62	73	28	22	6	2.8	M6	9	図1
MS50B24 D24	2,430	129	121.62	73	28	24	8	3.3	M8	9	図1
MS50B24 D25	2,430	129	121.62	73	28	25	8	3.3	M8	9	図1
MS50B24 D28	2,430	129	121.62	73	28	28	8	3.3	M8	9	図1
MS50B24 D30	2,430	129	121.62	73	28	30	8	3.3	M8	9	図1
MS50B24 D32	2,570	129	121.62	73	28	32	10	3.3	M8	9	図1
MS50B24 D35	2,570	129	121.62	73	28	35	10	3.3	M8	9	図1
MS50B24 D38	2,570	129	121.62	73	28	38	10	3.3	M8	9	図1
MS50B24 D40	2,570	129	121.62	73	28	40	12	3.3	M8	9	図1
MS50B24 D45	2,790	129	121.62	73	28	45	14	3.8	M10	9	図1
MS50B25 D24	2,470	134	126.66	73	28	24	8	3.3	M8	9	図1
MS50B25 D25	2,470	134	126.66	73	28	25	8	3.3	M8	9	図1
MS50B25 D28	2,470	134	126.66	73	28	28	8	3.3	M8	9	図1
MS50B25 D30	2,470	134	126.66	73	28	30	8	3.3	M8	9	図1
MS50B25 D32	2,670	134	126.66	73	28	32	10	3.3	M8	9	図1
MS50B25 D35	2,670	134	126.66	73	28	35	10	3.3	M8	8	図1
MS50B25 D38	2,670	134	126.66	73	28	38	10	3.3	M8	9	図1
MS50B25 D40	2,670	134	126.66	73	28	40	12	3.3	M8	9	図1
MS50B25 D45	2,930	134	126.66	73	28	45	14	3.8	M10	9	図1
MS50B26 D24	2,570	139	131.70	73	28	24	8	3.3	M8	9	図1
MS50B26 D25	2,570	139	131.70	73	28	25	8	3.3	M8	8	図1
MS50B26 D28	2,570	139	131.70	73	28	28	8	3.3	M8	9	図1
MS50B26 D30	2,570	139	131.70	73	28	30	8	3.3	M8	8	図1
MS50B26 D32	2,730	139	131.70	73	28	32	10	3.3	M8	9	図1
MS50B26 D35	2,730	139	131.70	73	28	35	10	3.3	M8	9	図1
MS50B26 D38	2,730	139	131.70	73	28	38	10	3.3	M8	9	図1
MS50B26 D40	2,730	139	131.70	73	28	40	12	3.3	M8	9	図1
MS50B26 D45	2,930	139	131.70	73	28	45	14	3.8	M10	9	図1
MS50B27 D25	2,730	144	136.74	73	28	25	8	3.3	M8	9	図1
MS50B27 D28	2,730	144	136.74	73	28	28	8	3.3	M8	9	図1
MS50B27 D30	2,730	144	136.74	73	28	30	8	3.3	M8	9	図1
MS50B27 D32	2,790	144	136.74	73	28	32	10	3.3	M8	9	図1
MS50B27 D35	2,790	144	136.74	73	28	35	10	3.3	M8	9	図1
MS50B27 D38	2,790	144	136.74	73	28	38	10	3.3	M8	9	図1
MS50B27 D40	2,790	144	136.74	73	28	40	12	3.3	M8	9	図1
MS50B27 D45	2,930	144	136.74	73	28	45	14	3.8	M10	9	図1
MS50B28 D25	2,730	149	141.79	73	28	25	8	3.3	M8	9	図1
MS50B28 D28	2,730	149	141.79	73	28	28	8	3.3	M8	9	図1
MS50B28 D30	2,730	149	141.79	73	28	30	8	3.3	M8	9	図1
MS50B28 D32	2,830	149	141.79	73	28	32	10	3.3	M8	9	図1
MS50B28 D35	2,830	149	141.79	73	28	35	10	3.3	M8	9	図1

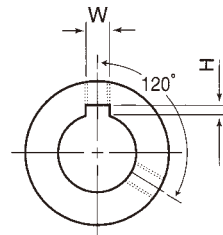
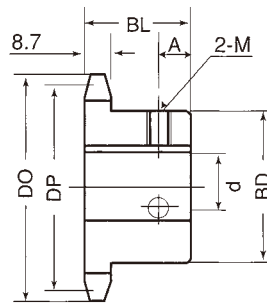
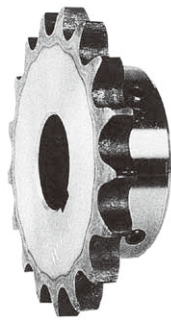


図1

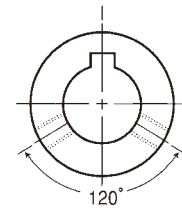


図2

## ● MS50B

品番	価格	外径 DO	ピッチ径 DP	ボス寸法		穴径 d(H7)	キー溝寸法		セットスクリュー		
				BD	BL		W	H	M	A	図
MS50B28 D38	2,830	149	141.79	73	28	38	10	3.3	M8	9	図1
MS50B28 D40	2,830	149	141.79	73	28	40	12	3.3	M8	9	図1
MS50B28 D45	2,970	149	141.79	73	28	45	14	3.8	M10	9	図1
MS50B29 D30	2,830	154	146.83	73	28	30	8	3.3	M8	9	図1
MS50B30 D25	2,830	160	151.87	73	28	25	8	3.3	M8	9	図1
MS50B30 D28	2,830	160	151.87	73	28	28	8	3.3	M8	9	図1
MS50B30 D30	2,830	160	151.87	73	28	30	8	3.3	M8	8	図1
MS50B30 D32	2,830	160	151.87	73	28	32	10	3.3	M8	9	図1
MS50B30 D35	2,930	160	151.87	73	28	35	10	3.3	M8	8	図1
MS50B30 D38	2,930	160	151.87	73	28	38	10	3.3	M8	9	図1
MS50B30 D40	2,930	160	151.87	73	28	40	12	3.3	M8	9	図1
MS50B30 D45	3,080	160	151.87	73	28	45	14	3.8	M10	9	図1
MS50B32 D25	2,910	170	161.96	73	28	25	8	3.3	M8	8	図1
MS50B32 D28	2,970	170	161.96	73	28	28	8	3.3	M8	9	図1
MS50B32 D30	2,970	170	161.96	73	28	30	8	3.3	M8	9	図1
MS50B32 D32	3,190	170	161.96	73	28	32	10	3.3	M8	9	図1
MS50B32 D35	3,190	170	161.96	73	28	35	10	3.3	M8	9	図1
MS50B32 D38	3,190	170	161.96	73	28	38	10	3.3	M8	9	図1
MS50B32 D40	3,190	170	161.96	73	28	40	12	3.3	M8	8	図1
MS50B32 D45	3,190	170	161.96	73	28	45	14	3.8	M10	9	図1
MS50B33 D35	3,310	175	167.01	73	28	35	10	3.3	M8	9	図1
MS50B34 D25	3,240	180	172.05	73	28	25	8	3.3	M8	9	図1
MS50B34 D28	3,240	180	172.05	73	28	28	8	3.3	M8	9	図1
MS50B34 D30	3,240	180	172.05	73	28	30	8	3.3	M8	9	図1
MS50B34 D32	3,450	180	172.05	73	28	32	10	3.3	M8	9	図1
MS50B34 D35	3,450	180	172.05	73	28	35	10	3.3	M8	9	図1
MS50B34 D38	3,600	180	172.05	73	28	38	10	3.3	M8	9	図1
MS50B34 D40	3,600	180	172.05	73	28	40	12	3.3	M8	9	図1
MS50B34 D45	3,600	180	172.05	73	28	45	14	3.8	M10	9	図1
MS50B35 D25	3,240	185	177.10	73	28	25	8	3.3	M8	9	図1
MS50B35 D28	3,240	185	177.10	73	28	28	8	3.3	M8	9	図1
MS50B35 D30	3,240	185	177.10	73	28	30	8	3.3	M8	9	図1
MS50B35 D32	3,450	185	177.10	73	28	32	10	3.3	M8	9	図1
MS50B35 D35	3,450	185	177.10	73	28	35	10	3.3	M8	9	図1
MS50B35 D38	3,600	185	177.10	73	28	38	10	3.3	M8	9	図1
MS50B35 D40	3,600	185	177.10	73	28	40	12	3.3	M8	9	図1
MS50B35 D45	3,600	185	177.10	73	28	45	14	3.8	M10	9	図1

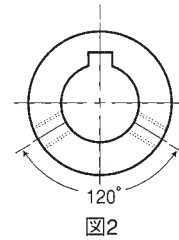
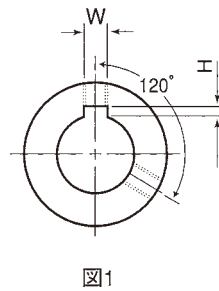
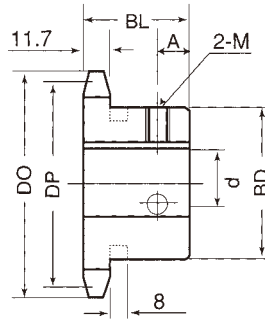
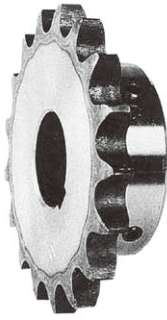
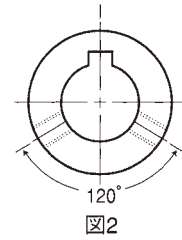
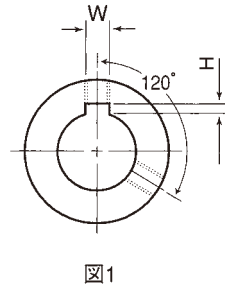
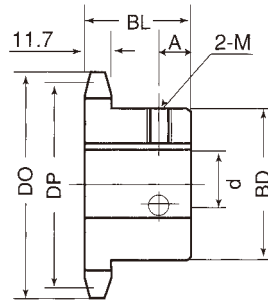
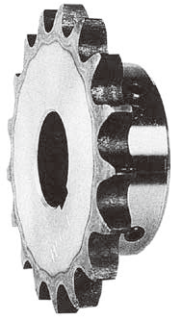


図1

図2

● MS60B

品番	価格	外径 DO	ピッチ径 DP	ボス寸法		穴径 d(H7)	キー溝寸法		セットスクリュー		
				BD	BL		W	H	M	A	図
MS60B9 D19	1,910	63	55.70	# 42	32	19	6	2.8	M6	6	図1
MS60B9 D20	1,910	63	55.70	# 42	32	20	6	2.8	M6	6	図1
MS60B9 D22	1,910	63	55.70	# 42	32	22	6	2.8	M6	6	図1
MS60B10 D19	1,910	70	61.65	# 49	32	19	6	2.8	M6	6	図1
MS60B10 D20	1,910	70	61.65	# 49	32	20	6	2.8	M6	6	図1
MS60B10 D22	1,910	70	61.65	# 49	32	22	6	2.8	M6	6	図1
MS60B10 D24	1,910	70	61.65	# 49	32	24	8	3.3	M8	6	図1
MS60B10 D25	1,910	70	61.65	# 49	32	25	8	3.3	M8	6	図1
MS60B11 D19	1,910	76	67.62	# 51	32	19	6	2.8	M6	6	図1
MS60B11 D20	1,910	76	67.62	# 51	32	20	6	2.8	M6	6	図1
MS60B11 D22	1,910	76	67.62	# 51	32	22	6	2.8	M6	6	図1
MS60B11 D24	1,910	76	67.62	# 51	32	24	8	3.3	M8	6	図1
MS60B11 D25	1,910	76	67.62	# 51	32	25	8	3.3	M8	6	図1
MS60B11 D28	1,910	76	67.62	# 51	32	28	8	3.3	M8	6	図1
MS60B11 D30	1,910	76	67.62	# 51	32	30	8	3.3	M8	6	図1
MS60B12 D19	2,010	82	73.60	51	32	19	6	2.8	M6	10	図1
MS60B12 D20	2,010	82	73.60	51	32	20	6	2.8	M6	10	図1
MS60B12 D22	2,010	82	73.60	51	32	22	6	2.8	M6	10	図1
MS60B12 D24	2,010	82	73.60	51	32	24	8	3.3	M8	10	図1
MS60B12 D25	2,010	82	73.60	51	32	25	8	3.3	M8	8	図1
MS60B12 D28	2,010	82	73.60	51	32	28	8	3.3	M8	8	図1
MS60B12 D30	2,010	82	73.60	51	32	30	8	3.3	M8	10	図1
MS60B12 D32	2,010	82	73.60	51	32	32	10	3.3	M8	8	図1
MS60B12 D35	2,010	82	73.60	51	32	35	10	3.3	M8	10	図1
MS60B13 D19	2,010	88	79.60	57	32	19	6	2.8	M6	10	図1
MS60B13 D20	2,010	88	79.60	57	32	20	6	2.8	M6	10	図1
MS60B13 D22	2,010	88	79.60	57	32	22	6	2.8	M6	10	図1
MS60B13 D24	2,010	88	79.60	57	32	24	8	3.3	M8	10	図1
MS60B13 D25	2,010	88	79.60	57	32	25	8	3.3	M8	10	図1
MS60B13 D28	2,010	88	79.60	57	32	28	8	3.3	M8	8	図1
MS60B13 D30	2,010	88	79.60	57	32	30	8	3.3	M8	8	図1
MS60B13 D32	2,060	88	79.60	57	32	32	10	3.3	M8	8	図1
MS60B13 D35	2,060	88	79.60	57	32	35	10	3.3	M8	8	図1
MS60B13 D38	2,060	88	79.60	57	32	38	10	3.3	M8	8	図1
MS60B13 D40	2,110	88	79.60	57	32	40	12	3.3	M8	10	図2
MS60B14 D19	2,050	94	85.61	62	32	19	6	2.8	M6	10	図1
MS60B14 D20	2,050	94	85.61	62	32	20	6	2.8	M6	10	図1
MS60B14 D22	2,050	94	85.61	62	32	22	6	2.8	M6	10	図1
MS60B14 D24	2,050	94	85.61	62	32	24	8	3.3	M8	10	図1
MS60B14 D25	2,050	94	85.61	62	32	25	8	3.3	M8	10	図1
MS60B14 D28	2,050	94	85.61	62	32	28	8	3.3	M8	10	図1
MS60B14 D30	2,050	94	85.61	62	32	30	8	3.3	M8	8	図1



● MS60B

品番	価格	外径 DO	ピッチ径 DP	ボス寸法		穴径 d(H7)	キー溝寸法		セットスクリュー		
				BD	BL		W	H	M	A	図
MS60B14 D32	2,110	94	85.61	62	32	32	10	3.3	M8	8	図1
MS60B14 D35	2,110	94	85.61	62	32	35	10	3.3	M8	8	図1
MS60B14 D38	2,110	94	85.61	62	32	38	10	3.3	M8	8	図1
MS60B14 D40	2,270	94	85.61	62	32	40	12	3.3	M8	8	図1
MS60B15 D18	2,210	101	91.62	68	32	18	6	2.8	M6	10	図1
MS60B15 D19	2,210	101	91.62	68	32	19	6	2.8	M6	10	図1
MS60B15 D20	2,210	101	91.62	68	32	20	6	2.8	M6	10	図1
MS60B15 D22	2,210	101	91.62	68	32	22	6	2.8	M6	8	図1
MS60B15 D24	2,210	101	91.62	68	32	24	8	3.3	M8	8	図1
MS60B15 D25	2,210	101	91.62	68	32	25	8	3.3	M8	10	図1
MS60B15 D28	2,210	101	91.62	68	32	28	8	3.3	M8	8	図1
MS60B15 D30	2,210	101	91.62	68	32	30	8	3.3	M8	8	図1
MS60B15 D32	2,270	101	91.62	68	32	32	10	3.3	M8	8	図1
MS60B15 D35	2,270	101	91.62	68	32	35	10	3.3	M8	8	図1
MS60B15 D38	2,270	101	91.62	68	32	38	10	3.3	M8	8	図1
MS60B15 D40	2,270	101	91.62	68	32	40	12	3.3	M8	8	図1
MS60B15 D42	2,520	101	91.62	68	32	42	12	3.3	M8	10	図1
MS60B15 D45	2,520	101	91.62	68	32	45	14	3.8	M10	8	図1
MS60B16 D19	2,320	107	97.65	73	32	19	6	2.8	M6	10	図1
MS60B16 D20	2,320	107	97.65	73	32	20	6	2.8	M6	10	図1
MS60B16 D22	2,320	107	97.65	73	32	22	6	2.8	M6	10	図1
MS60B16 D24	2,320	107	97.65	73	32	24	8	3.3	M8	8	図1
MS60B16 D25	2,320	107	97.65	73	32	25	8	3.3	M8	8	図1
MS60B16 D28	2,320	107	97.65	73	32	28	8	3.3	M8	10	図1
MS60B16 D30	2,320	107	97.65	73	32	30	8	3.3	M8	10	図1
MS60B16 D32	2,370	107	97.65	73	32	32	10	3.3	M8	8	図1
MS60B16 D35	2,430	107	97.65	73	32	35	10	3.3	M8	10	図1
MS60B16 D38	2,430	107	97.65	73	32	38	10	3.3	M8	10	図1
MS60B16 D40	2,430	107	97.65	73	32	40	12	3.3	M8	10	図1
MS60B16 D42	2,570	107	97.65	73	32	42	12	3.3	M8	10	図1
MS60B16 D45	2,570	107	97.65	73	32	45	14	3.8	M10	10	図1
MS60B16 D48	2,570	107	97.65	73	32	48	14	3.8	M10	10	図1
MS60B16 D50	2,570	107	97.65	73	32	50	14	3.8	M10	10	図1
MS60B17 D19	2,430	113	103.67	73	32	19	6	2.8	M6	10	図1
MS60B17 D20	2,430	113	103.67	73	32	20	6	2.8	M6	10	図1
MS60B17 D22	2,430	113	103.67	73	32	22	6	2.8	M6	10	図1
MS60B17 D24	2,430	113	103.67	73	32	24	8	3.3	M8	10	図1
MS60B17 D25	2,430	113	103.67	73	32	25	8	3.3	M8	10	図1
MS60B17 D28	2,430	113	103.67	73	32	28	8	3.3	M8	8	図1
MS60B17 D30	2,430	113	103.67	73	32	30	8	3.3	M8	10	図1
MS60B17 D32	2,520	113	103.67	73	32	32	10	3.3	M8	8	図1
MS60B17 D35	2,520	113	103.67	73	32	35	10	3.3	M8	8	図1

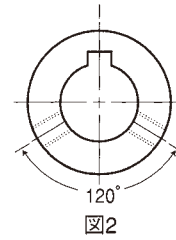
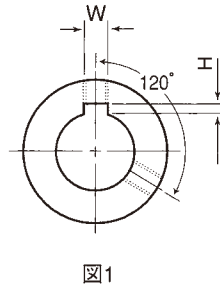
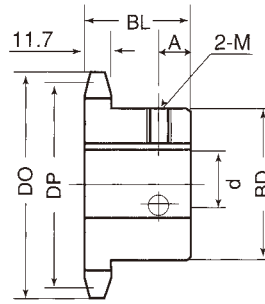
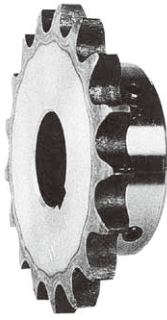
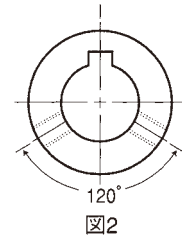
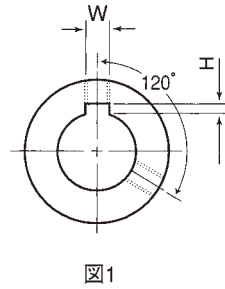
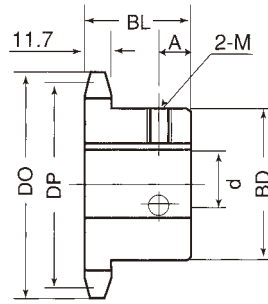
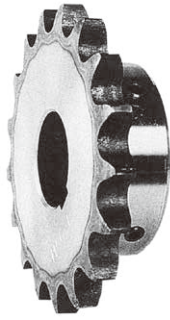


図1

図2

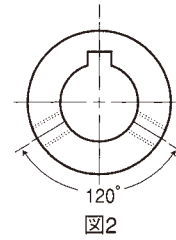
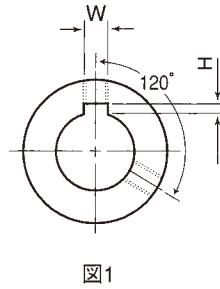
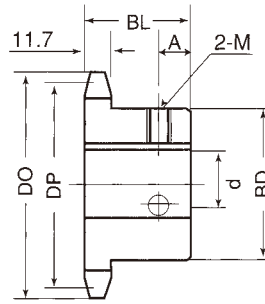
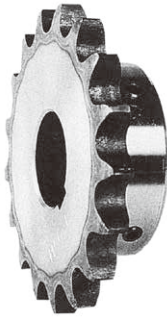
## ● MS60B

品番	価格	外径 DO	ピッチ径 DP	ボス寸法		穴径 d(H7)	キー溝寸法		セットスクリュー		
				BD	BL		W	H	M	A	図
MS60B17 D38	2,520	113	103.67	73	32	38	10	3.3	M8	8	図1
MS60B17 D40	2,520	113	103.67	73	32	40	12	3.3	M8	8	図1
MS60B17 D42	2,730	113	103.67	73	32	42	12	3.3	M8	10	図1
MS60B17 D45	2,730	113	103.67	73	32	45	14	3.8	M10	10	図1
MS60B17 D48	2,730	113	103.67	73	32	48	14	3.8	M10	10	図1
MS60B17 D50	2,730	113	103.67	73	32	50	14	3.8	M10	10	図1
MS60B18 D19	2,790	119	109.71	83	40	19	6	2.8	M6	14	図1
MS60B18 D20	2,790	119	109.71	83	40	20	6	2.8	M6	14	図1
MS60B18 D22	2,790	119	109.71	83	40	22	6	2.8	M6	14	図1
MS60B18 D24	2,790	119	109.71	83	40	24	8	3.3	M8	14	図1
MS60B18 D25	2,790	119	109.71	83	40	25	8	3.3	M8	12	図1
MS60B18 D28	2,790	119	109.71	83	40	28	8	3.3	M8	12	図1
MS60B18 D30	2,790	119	109.71	83	40	30	8	3.3	M8	12	図1
MS60B18 D32	2,820	119	109.71	83	40	32	10	3.3	M8	12	図1
MS60B18 D35	2,820	119	109.71	83	40	35	10	3.3	M8	12	図1
MS60B18 D38	2,820	119	109.71	83	40	38	10	3.3	M8	12	図1
MS60B18 D40	2,820	119	109.71	83	40	40	12	3.3	M8	12	図1
MS60B18 D42	2,880	119	109.71	83	40	42	12	3.3	M8	14	図1
MS60B18 D45	2,880	119	109.71	83	40	45	14	3.8	M10	12	図1
MS60B18 D48	3,190	119	109.71	83	40	48	14	3.8	M10	14	図1
MS60B18 D50	3,190	119	109.71	83	40	50	14	3.8	M10	12	図1
MS60B18 D55	3,190	119	109.71	83	40	55	16	4.3	M12	14	図1
MS60B19 D19	2,880	125	115.74	83	40	19	6	2.8	M6	14	図1
MS60B19 D20	2,880	125	115.74	83	40	20	6	2.8	M6	14	図1
MS60B19 D22	2,880	125	115.74	83	40	22	6	2.8	M6	14	図1
MS60B19 D24	2,880	125	115.74	83	40	24	8	3.3	M8	14	図1
MS60B19 D25	2,880	125	115.74	83	40	25	8	3.3	M8	12	図1
MS60B19 D28	2,880	125	115.74	83	40	28	8	3.3	M8	14	図1
MS60B19 D30	2,880	125	115.74	83	40	30	8	3.3	M8	12	図1
MS60B19 D32	2,910	125	115.74	83	40	32	10	3.3	M8	12	図1
MS60B19 D35	2,910	125	115.74	83	40	35	10	3.3	M8	12	図1
MS60B19 D38	2,910	125	115.74	83	40	38	10	3.3	M8	12	図1
MS60B19 D40	2,910	125	115.74	83	40	40	12	3.3	M8	12	図1
MS60B19 D42	2,970	125	115.74	83	40	42	12	3.3	M8	14	図1
MS60B19 D45	2,970	125	115.74	83	40	45	14	3.8	M10	14	図1
MS60B19 D48	3,350	125	115.74	83	40	48	14	3.8	M10	14	図1
MS60B19 D50	3,350	125	115.74	83	40	50	14	3.8	M10	14	図1
MS60B19 D55	3,350	125	115.74	83	40	55	16	4.3	M12	14	図1
MS60B20 D19	2,970	131	121.78	83	40	19	6	2.8	M6	14	図1
MS60B20 D20	2,970	131	121.78	83	40	20	6	2.8	M6	14	図1
MS60B20 D22	2,970	131	121.78	83	40	22	6	2.8	M6	14	図1
MS60B20 D24	2,970	131	121.78	83	40	24	8	3.3	M8	14	図1



● MS60B

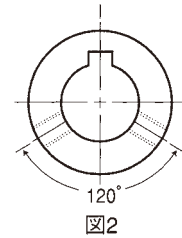
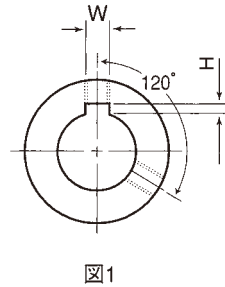
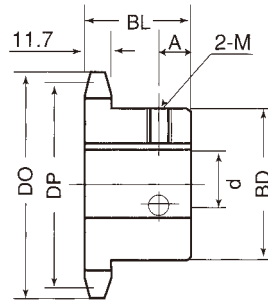
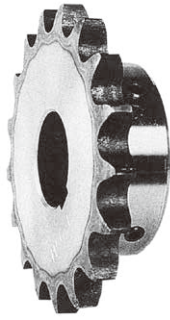
品番	価格	外径 DO	ピッチ径 DP	ボス寸法		穴径 d(H7)	キー溝寸法		セットスクリュー		
				BD	BL		W	H	M	A	図
MS60B20 D25	2,970	131	121.78	83	40	25	8	3.3	M8	12	図1
MS60B20 D28	2,970	131	121.78	83	40	28	8	3.3	M8	12	図1
MS60B20 D30	2,970	131	121.78	83	40	30	8	3.3	M8	12	図1
MS60B20 D32	3,010	131	121.78	83	40	32	10	3.3	M8	12	図1
MS60B20 D35	3,010	131	121.78	83	40	35	10	3.3	M8	12	図1
MS60B20 D38	3,010	131	121.78	83	40	38	10	3.3	M8	12	図1
MS60B20 D40	3,010	131	121.78	83	40	40	12	3.3	M8	12	図1
MS60B20 D42	3,350	131	121.78	83	40	42	12	3.3	M8	14	図1
MS60B20 D45	3,350	131	121.78	83	40	45	14	3.8	M10	14	図1
MS60B20 D48	3,350	131	121.78	83	40	48	14	3.8	M10	14	図1
MS60B20 D50	3,350	131	121.78	83	40	50	14	3.8	M10	12	図1
MS60B20 D55	3,350	131	121.78	83	40	55	16	4.3	M12	14	図1
MS60B21 D20	3,080	137	127.82	83	40	20	6	2.8	M6	14	図1
MS60B21 D22	3,080	137	127.82	83	40	22	6	2.8	M6	14	図1
MS60B21 D24	3,080	137	127.82	83	40	24	8	3.3	M8	14	図1
MS60B21 D25	3,080	137	127.82	83	40	25	8	3.3	M8	14	図1
MS60B21 D28	3,080	137	127.82	83	40	28	8	3.3	M8	12	図1
MS60B21 D30	3,080	137	127.82	83	40	30	8	3.3	M8	14	図1
MS60B21 D32	3,190	137	127.82	83	40	32	10	3.3	M8	14	図1
MS60B21 D35	3,190	137	127.82	83	40	35	10	3.3	M8	12	図1
MS60B21 D38	3,190	137	127.82	83	40	38	10	3.3	M8	14	図1
MS60B21 D40	3,190	137	127.82	83	40	40	12	3.3	M8	12	図1
MS60B21 D42	3,490	137	127.82	83	40	42	12	3.3	M8	14	図1
MS60B21 D45	3,490	137	127.82	83	40	45	14	3.8	M10	14	図1
MS60B21 D48	3,490	137	127.82	83	40	48	14	3.8	M10	14	図1
MS60B21 D50	3,490	137	127.82	83	40	50	14	3.8	M10	14	図1
MS60B21 D55	3,490	137	127.82	83	40	55	16	4.3	M12	14	図1
MS60B22 D20	3,350	143	133.86	83	40	20	6	2.8	M6	14	図1
MS60B22 D22	3,350	143	133.86	83	40	22	6	2.8	M6	14	図1
MS60B22 D24	3,350	143	133.86	83	40	24	8	3.3	M8	14	図1
MS60B22 D25	3,350	143	133.86	83	40	25	8	3.3	M8	14	図1
MS60B22 D28	3,350	143	133.86	83	40	28	8	3.3	M8	14	図1
MS60B22 D30	3,350	143	133.86	83	40	30	8	3.3	M8	14	図1
MS60B22 D32	3,350	143	133.86	83	40	32	10	3.3	M8	14	図1
MS60B22 D35	3,350	143	133.86	83	40	35	10	3.3	M8	12	図1
MS60B22 D38	3,350	143	133.86	83	40	38	10	3.3	M8	12	図1
MS60B22 D40	3,350	143	133.86	83	40	40	12	3.3	M8	14	図1
MS60B22 D42	3,600	143	133.86	83	40	42	12	3.3	M8	14	図1
MS60B22 D45	3,600	143	133.86	83	40	45	14	3.8	M10	12	図1
MS60B22 D48	3,600	143	133.86	83	40	48	14	3.8	M10	14	図1
MS60B22 D50	3,600	143	133.86	83	40	50	14	3.8	M10	14	図1
MS60B22 D55	4,110	143	133.86	83	40	55	16	4.3	M12	14	図1



● MS60B

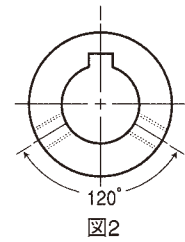
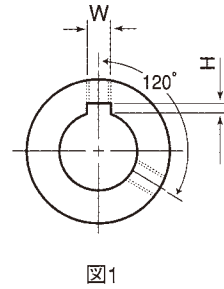
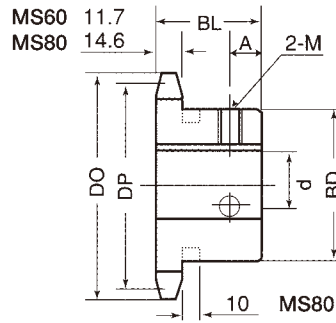
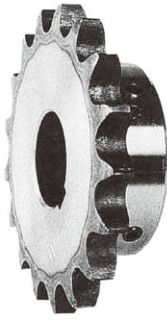
品番	価格	外径 DO	ピッチ径 DP	ボス寸法		穴径 d(H7)	キー溝寸法		セットスクリュー		
				BD	BL		W	H	M	A	図
MS60B23 D20	3,350	149	139.90	83	40	20	6	2.8	M6	14	図1
MS60B23 D22	3,350	149	139.90	83	40	22	6	2.8	M6	14	図1
MS60B23 D24	3,350	149	139.90	83	40	24	8	3.3	M8	14	図1
MS60B23 D25	3,350	149	139.90	83	40	25	8	3.3	M8	14	図1
MS60B23 D28	3,350	149	139.90	83	40	28	8	3.3	M8	14	図1
MS60B23 D30	3,350	149	139.90	83	40	30	8	3.3	M8	14	図1
MS60B23 D32	3,490	149	139.90	83	40	32	10	3.3	M8	14	図1
MS60B23 D35	3,490	149	139.90	83	40	35	10	3.3	M8	12	図1
MS60B23 D38	3,490	149	139.90	83	40	38	10	3.3	M8	14	図1
MS60B23 D40	3,490	149	139.90	83	40	40	12	3.3	M8	12	図1
MS60B23 D42	3,600	149	139.90	83	40	42	12	3.3	M8	14	図1
MS60B23 D45	3,600	149	139.90	83	40	45	14	3.8	M10	14	図1
MS60B23 D48	3,600	149	139.90	83	40	48	14	3.8	M10	14	図1
MS60B23 D50	3,600	149	139.90	83	40	50	14	3.8	M10	14	図1
MS60B23 D55	3,600	149	139.90	83	40	55	16	4.3	M12	14	図1
MS60B24 D20	3,490	155	145.95	83	40	20	6	2.8	M6	14	図1
MS60B24 D22	3,490	155	145.95	83	40	22	6	2.8	M6	14	図1
MS60B24 D24	3,490	155	145.95	83	40	24	8	3.3	M8	14	図1
MS60B24 D25	3,490	155	145.95	83	40	25	8	3.3	M8	14	図1
MS60B24 D28	3,490	155	145.95	83	40	28	8	3.3	M8	14	図1
MS60B24 D30	3,490	155	145.95	83	40	30	8	3.3	M8	14	図1
MS60B24 D32	3,490	155	145.95	83	40	32	10	3.3	M8	14	図1
MS60B24 D35	3,490	155	145.95	83	40	35	10	3.3	M8	14	図1
MS60B24 D38	3,490	155	145.95	83	40	38	10	3.3	M8	14	図1
MS60B24 D40	3,490	155	145.95	83	40	40	12	3.3	M8	12	図1
MS60B24 D42	3,810	155	145.95	83	40	42	12	3.3	M8	14	図1
MS60B24 D45	3,810	155	145.95	83	40	45	14	3.8	M10	14	図1
MS60B24 D48	3,810	155	145.95	83	40	48	14	3.8	M10	14	図1
MS60B24 D50	3,810	155	145.95	83	40	50	14	3.8	M10	14	図1
MS60B24 D55	4,370	155	145.95	83	40	55	16	4.3	M12	14	図1
MS60B25 D20	3,600	162	151.99	83	40	20	6	2.8	M6	14	図1
MS60B25 D22	3,600	162	151.99	83	40	22	6	2.8	M6	14	図1
MS60B25 D24	3,600	162	151.99	83	40	24	8	3.3	M8	14	図1
MS60B25 D25	3,600	162	151.99	83	40	25	8	3.3	M8	14	図1
MS60B25 D28	3,600	162	151.99	83	40	28	8	3.3	M8	14	図1
MS60B25 D30	3,600	162	151.99	83	40	30	8	3.3	M8	14	図1
MS60B25 D32	3,600	162	151.99	83	40	32	10	3.3	M8	14	図1
MS60B25 D35	3,600	162	151.99	83	40	35	10	3.3	M8	14	図1
MS60B25 D38	3,600	162	151.99	83	40	38	10	3.3	M8	14	図1
MS60B25 D40	3,600	162	151.99	83	40	40	12	3.3	M8	12	図1
MS60B25 D42	3,850	162	151.99	83	40	42	12	3.3	M8	14	図1





● MS60B

品番	価格	外径 DO	ピッチ径 DP	ボス寸法		穴径 d(H7)	キー溝寸法		セットスクリュー		
				BD	BL		W	H	M	A	図
MS60B25 D45	3,850	162	151.99	83	40	45	14	3.8	M10	14	図1
MS60B25 D48	3,850	162	151.99	83	40	48	14	3.8	M10	14	図1
MS60B25 D50	3,850	162	151.99	83	40	50	14	3.8	M10	14	図1
MS60B25 D55	4,410	162	151.99	83	40	55	16	4.3	M12	14	図1
MS60B26 D20	3,690	168	158.04	83	40	20	6	2.8	M6	14	図1
MS60B26 D22	3,690	168	158.04	83	40	22	6	2.8	M6	14	図1
MS60B26 D24	3,690	168	158.04	83	40	24	8	3.3	M8	14	図1
MS60B26 D25	3,690	168	158.04	83	40	25	8	3.3	M8	14	図1
MS60B26 D28	3,690	168	158.04	83	40	28	8	3.3	M8	14	図1
MS60B26 D30	3,690	168	158.04	83	40	30	8	3.3	M8	14	図1
MS60B26 D32	3,690	168	158.04	83	40	32	10	3.3	M8	14	図1
MS60B26 D35	3,690	168	158.04	83	40	35	10	3.3	M8	14	図1
MS60B26 D38	3,690	168	158.04	83	40	38	10	3.3	M8	14	図1
MS60B26 D40	3,690	168	158.04	83	40	40	12	3.3	M8	12	図1
MS60B26 D42	4,070	168	158.04	83	40	42	12	3.3	M8	14	図1
MS60B26 D45	4,070	168	158.04	83	40	45	14	3.8	M10	14	図1
MS60B26 D48	4,070	168	158.04	83	40	48	14	3.8	M10	14	図1
MS60B26 D50	4,070	168	158.04	83	40	50	14	3.8	M10	14	図1
MS60B26 D55	4,520	168	158.04	83	40	55	16	4.3	M12	14	図1
MS60B27 D22	3,850	174	164.09	83	40	22	6	2.8	M6	14	図1
MS60B27 D24	3,850	174	164.09	83	40	24	8	3.3	M8	14	図1
MS60B27 D25	3,850	174	164.09	83	40	25	8	3.3	M8	14	図1
MS60B27 D28	3,850	174	164.09	83	40	28	8	3.3	M8	14	図1
MS60B27 D30	3,850	174	164.09	83	40	30	8	3.3	M8	14	図1
MS60B27 D32	3,850	174	164.09	83	40	32	10	3.3	M8	14	図1
MS60B27 D35	3,850	174	164.09	83	40	35	10	3.3	M8	12	図1
MS60B27 D38	3,850	174	164.09	83	40	38	10	3.3	M8	14	図1
MS60B27 D40	3,850	174	164.09	83	40	40	12	3.3	M8	14	図1
MS60B27 D42	4,110	174	164.09	83	40	42	12	3.3	M8	14	図1
MS60B27 D45	4,110	174	164.09	83	40	45	14	3.8	M10	14	図1
MS60B27 D48	4,110	174	164.09	83	40	48	14	3.8	M10	14	図1
MS60B27 D50	4,110	174	164.09	83	40	50	14	3.8	M10	14	図1
MS60B28 D22	4,000	180	170.14	83	40	22	6	2.8	M6	14	図1
MS60B28 D24	4,000	180	170.14	83	40	24	8	3.3	M8	14	図1
MS60B28 D25	4,000	180	170.14	83	40	25	8	3.3	M8	14	図1
MS60B28 D28	4,000	180	170.14	83	40	28	8	3.3	M8	14	図1
MS60B28 D30	4,000	180	170.14	83	40	30	8	3.3	M8	14	図1
MS60B28 D32	4,000	180	170.14	83	40	32	10	3.3	M8	14	図1
MS60B28 D35	4,000	180	170.14	83	40	35	10	3.3	M8	12	図1
MS60B28 D38	4,000	180	170.14	83	40	38	10	3.3	M8	14	図1
MS60B28 D40	4,000	180	170.14	83	40	40	12	3.3	M8	12	図1
MS60B28 D42	4,270	180	170.14	83	40	42	12	3.3	M8	14	図1



● MS60B・MS80B

品番	価格	外径 DO	ピッチ径 DP	ボス寸法		穴径 d(H7)	キー溝寸法		セットスクリュー		
				BD	BL		W	H	M	A	図
MS60B28 D45	4,270	180	170.14	83	40	45	14	3.8	M10	14	図1
MS60B28 D48	4,270	180	170.14	83	40	48	14	3.8	M10	14	図1
MS60B28 D50	4,270	180	170.14	83	40	50	14	3.8	M10	14	図1
MS60B30 D22	4,270	193	182.25	83	40	22	6	2.8	M6	14	図1
MS60B30 D24	4,270	193	182.25	83	40	24	8	3.3	M8	14	図1
MS60B30 D25	4,270	193	182.25	83	40	25	8	3.3	M8	14	図1
MS60B30 D28	4,270	193	182.25	83	40	28	8	3.3	M8	14	図1
MS60B30 D30	4,270	193	182.25	83	40	30	8	3.3	M8	14	図1
MS60B30 D32	4,270	193	182.25	83	40	32	10	3.3	M8	14	図1
MS60B30 D35	4,270	193	182.25	83	40	35	10	3.3	M8	14	図1
MS60B30 D38	4,270	193	182.25	83	40	38	10	3.3	M8	14	図1
MS60B30 D40	4,270	193	182.25	83	40	40	12	3.3	M8	12	図1
MS60B30 D42	4,520	193	182.25	83	40	42	12	3.3	M8	14	図1
MS60B30 D45	4,520	193	182.25	83	40	45	14	3.8	M10	14	図1
MS60B30 D48	4,520	193	182.25	83	40	48	14	3.8	M10	14	図1
MS60B30 D50	4,520	193	182.25	83	40	50	14	3.8	M10	14	図1
MS80B9 D25	2,930	85	74.27	# 58	40	25	8	3.3	M8	7	図1
MS80B9 D28	2,930	85	74.27	# 58	40	28	8	3.3	M8	7	図1
MS80B9 D30	2,930	85	74.27	# 58	40	30	8	3.3	M8	7	図1
MS80B9 D32	2,930	85	74.27	# 58	40	32	10	3.3	M8	7	図1
MS80B10 D25	2,930	93	82.19	52	40	25	8	3.3	M8	12	図1
MS80B10 D28	2,930	93	82.19	52	40	28	8	3.3	M8	12	図1
MS80B10 D30	2,930	93	82.19	52	40	30	8	3.3	M8	12	図1
MS80B10 D32	2,930	93	82.19	52	40	32	10	3.3	M8	12	図1
MS80B11 D25	2,880	101	90.16	60	40	25	8	3.3	M8	12	図1
MS80B11 D28	2,880	101	90.16	60	40	28	8	3.3	M8	12	図1
MS80B11 D30	2,880	101	90.16	60	40	30	8	3.3	M8	12	図1
MS80B11 D32	2,880	101	90.16	60	40	32	10	3.3	M8	12	図1
MS80B11 D35	2,880	101	90.16	60	40	35	10	3.3	M8	12	図1
MS80B11 D38	2,880	101	90.16	60	40	38	10	3.3	M8	12	図1
MS80B12 D25	2,790	110	98.14	67	40	25	8	3.3	M8	12	図1
MS80B12 D28	2,790	110	98.14	67	40	28	8	3.3	M8	12	図1
MS80B12 D30	2,790	110	98.14	67	40	30	8	3.3	M8	12	図1
MS80B12 D32	2,790	110	98.14	67	40	32	10	3.3	M8	12	図1
MS80B12 D35	2,930	110	98.14	67	40	35	10	3.3	M8	12	図1
MS80B12 D40	2,930	110	98.14	67	40	40	12	3.3	M8	12	図1
MS80B12 D42	2,930	110	98.14	67	40	42	12	3.3	M8	12	図1
MS80B12 D45	2,930	110	98.14	67	40	45	14	3.8	M10	12	図1
MS80B13 D25	2,930	118	106.14	77	40	25	8	3.3	M8	12	図1
MS80B13 D28	2,930	118	106.14	77	40	28	8	3.3	M8	12	図1
MS80B13 D30	2,930	118	106.14	77	40	30	8	3.3	M8	12	図1

#印はボス径に溝があります。

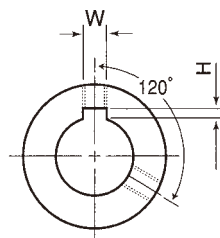
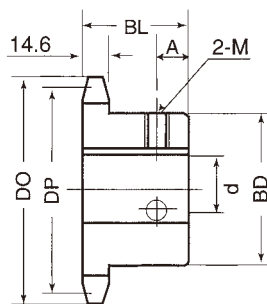
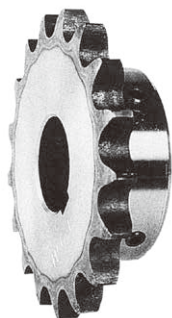


図1

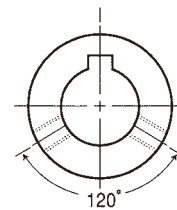


図2

● MS80B

品番	価格	外径 DO	ピッチ径 DP	ボス寸法		穴径 d(H7)	キー溝寸法		セットスクリュー		
				BD	BL		W	H	M	A	図
MS80B13 D32	2,930	118	106.14	77	40	32	10	3.3	M8	12	図1
MS80B13 D35	2,930	118	106.14	77	40	35	10	3.3	M8	12	図1
MS80B13 D38	2,930	118	106.14	77	40	38	10	3.3	M8	12	図1
MS80B13 D40	2,930	118	106.14	77	40	40	12	3.3	M8	12	図1
MS80B13 D42	3,230	118	106.14	77	40	42	12	3.3	M8	12	図1
MS80B13 D45	3,310	118	106.14	77	40	45	14	3.8	M10	12	図1
MS80B13 D48	3,310	118	106.14	77	40	48	14	3.8	M10	12	図1
MS80B13 D50	3,310	118	106.14	77	40	50	14	3.8	M10	12	図1
MS80B14 D25	3,080	126	114.15	77	40	25	8	3.3	M8	12	図1
MS80B14 D28	3,080	126	114.15	77	40	28	8	3.3	M8	12	図1
MS80B14 D30	3,080	126	114.15	77	40	30	8	3.3	M8	12	図1
MS80B14 D32	3,080	126	114.15	77	40	32	10	3.3	M8	12	図1
MS80B14 D35	3,080	126	114.15	77	40	35	10	3.3	M8	12	図1
MS80B14 D38	3,080	126	114.15	77	40	38	10	3.3	M8	12	図1
MS80B14 D40	3,080	126	114.15	77	40	40	12	3.3	M8	12	図1
MS80B14 D42	3,390	126	114.15	77	40	42	12	3.3	M8	12	図1
MS80B14 D45	3,390	126	114.15	77	40	45	14	3.8	M10	12	図1
MS80B14 D48	3,390	126	114.15	77	40	48	14	3.8	M10	12	図1
MS80B14 D50	3,390	126	114.15	77	40	50	14	3.8	M10	12	図1
MS80B15 D25	3,350	134	122.17	93	40	25	8	3.3	M8	12	図1
MS80B15 D28	3,350	134	122.17	93	40	28	8	3.3	M8	12	図1
MS80B15 D30	3,350	134	122.17	93	40	30	8	3.3	M8	12	図1
MS80B15 D32	3,350	134	122.17	93	40	32	10	3.3	M8	12	図1
MS80B15 D35	3,350	134	122.17	93	40	35	10	3.3	M8	12	図1
MS80B15 D38	3,350	134	122.17	93	40	38	10	3.3	M8	12	図1
MS80B15 D40	3,350	134	122.17	93	40	40	12	3.3	M8	12	図1
MS80B15 D42	3,730	134	122.17	93	40	42	12	3.3	M8	12	図1
MS80B15 D45	3,810	134	122.17	93	40	45	14	3.8	M10	12	図1
MS80B15 D48	3,810	134	122.17	93	40	48	14	3.8	M10	12	図1
MS80B15 D50	3,810	134	122.17	93	40	50	14	3.8	M10	12	図1
MS80B15 D55	4,000	134	122.17	93	40	55	16	4.3	M12	12	図1
MS80B15 D60	4,000	134	122.17	93	40	60	18	4.4	M12	12	図1
MS80B16 D25	3,390	142	130.20	93	40	25	8	3.3	M8	12	図1
MS80B16 D28	3,390	142	130.20	93	40	28	8	3.3	M8	12	図1
MS80B16 D30	3,390	142	130.20	93	40	30	8	3.3	M8	12	図1
MS80B16 D32	3,390	142	130.20	93	40	32	10	3.3	M8	12	図1
MS80B16 D35	3,390	142	130.20	93	40	35	10	3.3	M8	12	図1
MS80B16 D38	3,390	142	130.20	93	40	38	10	3.3	M8	12	図1
MS80B16 D40	3,390	142	130.20	93	40	40	12	3.3	M8	12	図1
MS80B16 D42	3,810	142	130.20	93	40	42	12	3.3	M8	12	図1
MS80B16 D45	3,810	142	130.20	93	40	45	14	3.8	M10	12	図1
MS80B16 D48	3,810	142	130.20	93	40	48	14	3.8	M10	12	図1

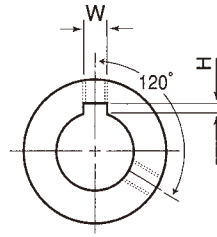
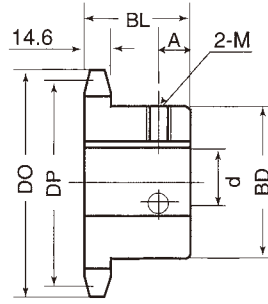
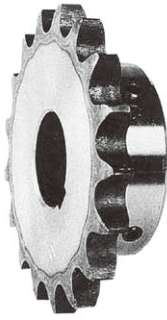


図1

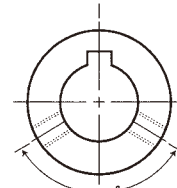


図2

● MS80B

品番	価格	外径 DO	ピッチ径 DP	ボス寸法		穴径 d(H7)	キー溝寸法		セットスクリュー		
				BD	BL		W	H	M	A	図
MS80B16 D50	3,810	142	130.20	93	40	50	14	3.8	M10	12	図1
MS80B16 D55	4,210	142	130.20	93	40	55	16	4.3	M12	12	図1
MS80B16 D60	4,210	142	130.20	93	40	60	18	4.4	M12	12	図1
MS80B17 D25	3,850	151	138.23	93	40	25	8	3.3	M8	12	図1
MS80B17 D28	3,850	151	138.23	93	40	28	8	3.3	M8	12	図1
MS80B17 D30	3,850	151	138.23	93	40	30	8	3.3	M8	12	図1
MS80B17 D32	3,850	151	138.23	93	40	32	10	3.3	M8	12	図1
MS80B17 D35	3,850	151	138.23	93	40	35	10	3.3	M8	12	図1
MS80B17 D38	3,850	151	138.23	93	40	38	10	3.3	M8	12	図1
MS80B17 D40	3,850	151	138.23	93	40	40	12	3.3	M8	12	図1
MS80B17 D42	4,000	151	138.23	93	40	42	12	3.3	M8	12	図1
MS80B17 D45	4,000	151	138.23	93	40	45	14	3.8	M10	12	図1
MS80B17 D48	4,000	151	138.23	93	40	48	14	3.8	M10	12	図1
MS80B17 D50	4,000	151	138.23	93	40	50	14	3.8	M10	12	図1
MS80B17 D55	4,330	151	138.23	93	40	55	16	4.3	M12	12	図1
MS80B17 D60	4,330	151	138.23	93	40	60	18	4.4	M12	12	図1
MS80B18 D25	4,070	159	146.27	93	40	25	8	3.3	M8	12	図1
MS80B18 D28	4,070	159	146.27	93	40	28	8	3.3	M8	12	図1
MS80B18 D30	4,070	159	146.27	93	40	30	8	3.3	M8	12	図1
MS80B18 D32	4,070	159	146.27	93	40	32	10	3.3	M8	12	図1
MS80B18 D35	4,070	159	146.27	93	40	35	10	3.3	M8	12	図1
MS80B18 D38	4,070	159	146.27	93	40	38	10	3.3	M8	12	図1
MS80B18 D40	4,070	159	146.27	93	40	40	12	3.3	M8	12	図1
MS80B18 D42	4,070	159	146.27	93	40	42	12	3.3	M8	12	図1
MS80B18 D45	4,480	159	146.27	93	40	45	14	3.8	M10	12	図1
MS80B18 D48	4,480	159	146.27	93	40	48	14	3.8	M10	12	図1
MS80B18 D50	4,480	159	146.27	93	40	50	14	3.8	M10	12	図1
MS80B18 D55	4,720	159	146.27	93	40	55	16	4.3	M12	12	図1
MS80B18 D60	4,720	159	146.27	93	40	60	18	4.4	M12	12	図1
MS80B19 D25	4,210	167	154.32	93	40	25	8	3.3	M8	12	図1
MS80B19 D28	4,210	167	154.32	93	40	28	8	3.3	M8	12	図1
MS80B19 D30	4,210	167	154.32	93	40	30	8	3.3	M8	12	図1
MS80B19 D32	4,210	167	154.32	93	40	32	10	3.3	M8	12	図1
MS80B19 D35	4,210	167	154.32	93	40	35	10	3.3	M8	12	図1
MS80B19 D38	4,210	167	154.32	93	40	38	10	3.3	M8	12	図1
MS80B19 D40	4,210	167	154.32	93	40	40	12	3.3	M8	12	図1
MS80B19 D42	4,210	167	154.32	93	40	42	12	3.3	M8	12	図1
MS80B19 D45	4,410	167	154.32	93	40	45	14	3.8	M10	12	図1
MS80B19 D48	4,410	167	154.32	93	40	48	14	3.8	M10	12	図1
MS80B19 D50	4,410	167	154.32	93	40	50	14	3.8	M10	12	図1
MS80B19 D55	4,930	167	154.32	93	40	55	16	4.3	M12	12	図1
MS80B19 D60	4,930	167	154.32	93	40	60	18	4.4	M12	12	図1

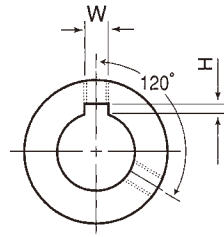
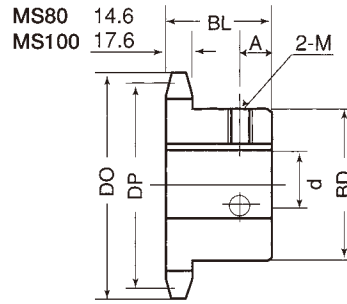
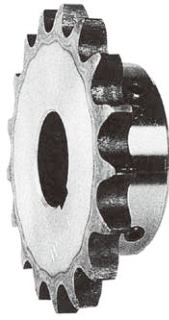


図1

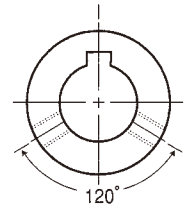


図2

● MS80B・MS100B

品番	価格	外径 DO	ピッチ径 DP	ボス寸法		穴径 d(H7)	キー溝寸法		セットスクリュー		
				BD	BL		W	H	M	A	図
MS80B20 D25	4,520	175	162.37	93	40	25	8	3.3	M8	12	図1
MS80B20 D28	4,520	175	162.37	93	40	28	8	3.3	M8	12	図1
MS80B20 D30	4,520	175	162.37	93	40	30	8	3.3	M8	12	図1
MS80B20 D32	4,520	175	162.37	93	40	32	10	3.3	M8	12	図1
MS80B20 D35	4,520	175	162.37	93	40	35	10	3.3	M8	12	図1
MS80B20 D38	4,520	175	162.37	93	40	38	10	3.3	M8	12	図1
MS80B20 D40	4,520	175	162.37	93	40	40	12	3.3	M8	12	図1
MS80B20 D42	4,520	175	162.37	93	40	42	12	3.3	M8	12	図1
MS80B20 D45	4,680	175	162.37	93	40	45	14	3.8	M10	12	図1
MS80B20 D48	4,790	175	162.37	93	40	48	14	3.8	M10	12	図1
MS80B20 D50	4,790	175	162.37	93	40	50	14	3.8	M10	12	図1
MS80B20 D55	5,130	175	162.37	93	40	55	16	4.3	M12	12	図1
MS80B20 D60	5,130	175	162.37	93	40	60	18	4.4	M12	12	図1
MS80B21 D25	4,990	183	170.42	93	40	25	8	3.3	M8	12	図1
MS80B21 D28	4,990	183	170.42	93	40	28	8	3.3	M8	12	図1
MS80B21 D30	4,990	183	170.42	93	40	30	8	3.3	M8	12	図1
MS80B21 D32	4,990	183	170.42	93	40	32	10	3.3	M8	12	図1
MS80B21 D35	4,990	183	170.42	93	40	35	10	3.3	M8	12	図1
MS80B21 D38	4,990	183	170.42	93	40	38	10	3.3	M8	12	図1
MS80B21 D40	4,990	183	170.42	93	40	40	12	3.3	M8	12	図1
MS80B21 D42	4,990	183	170.42	93	40	42	12	3.3	M8	12	図1
MS80B21 D45	4,990	183	170.42	93	40	45	14	3.8	M10	12	図1
MS80B21 D48	4,990	183	170.42	93	40	48	14	3.8	M10	12	図1
MS80B21 D50	4,990	183	170.42	93	40	50	14	3.8	M10	12	図1
MS80B21 D55	5,290	183	170.42	93	40	55	16	4.3	M12	12	図1
MS80B21 D60	5,290	183	170.42	93	40	60	18	4.4	M12	12	図1
MS100B12 D25	5,550	137	122.67	86	50	25	8	3.3	M8	16	図1
MS100B12 D30	5,550	137	122.67	86	50	30	8	3.3	M8	16	図1
MS100B12 D32	5,750	137	122.67	86	50	32	10	3.3	M8	16	図1
MS100B12 D38	5,750	137	122.67	86	50	38	10	3.3	M8	16	図1
MS100B12 D40	5,750	137	122.67	86	50	40	12	3.3	M8	16	図1
MS100B12 D45	5,750	137	122.67	86	50	45	14	3.8	M10	16	図1
MS100B12 D48	5,750	137	122.67	86	50	48	14	3.8	M10	16	図1
MS100B12 D50	5,750	137	122.67	86	50	50	14	3.8	M10	16	図1
MS100B12 D55	5,750	137	122.67	86	50	55	16	4.3	M12	16	図1
MS100B13 D25	6,050	147	132.67	88	50	25	8	3.3	M8	16	図1
MS100B13 D30	6,050	147	132.67	88	50	30	8	3.3	M8	16	図1
MS100B13 D32	6,270	147	132.67	88	50	32	10	3.3	M8	16	図1
MS100B13 D38	6,270	147	132.67	88	50	38	10	3.3	M8	16	図1
MS100B13 D40	6,270	147	132.67	88	50	40	12	3.3	M8	16	図1
MS100B13 D45	6,270	147	132.67	88	50	45	14	3.8	M10	16	図1
MS100B13 D48	6,270	147	132.67	88	50	48	14	3.8	M10	16	図1

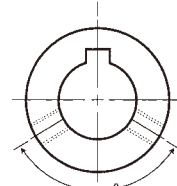
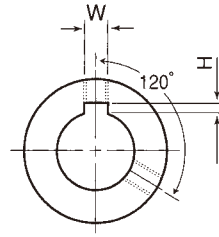
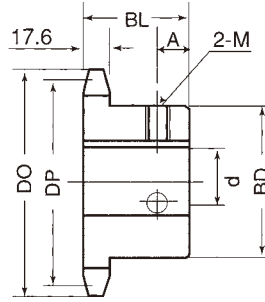
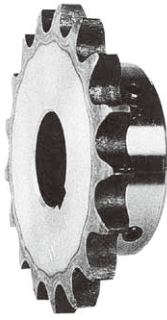


図1

図2

● MS100B

品番	価格	外径 DO	ピッチ径 DP	ボス寸法		穴径 d(H7)	キー溝寸法		セットスクリュー		
				BD	BL		W	H	M	A	図
MS100B13 D50	6,270	147	132.67	88	50	50	14	3.8	M10	16	図1
MS100B13 D55	6,270	147	132.67	88	50	55	16	4.3	M12	16	図1
MS100B14 D25	6,470	157	142.68	88	50	25	8	3.3	M8	16	図1
MS100B14 D30	6,470	157	142.68	88	50	30	8	3.3	M8	16	図1
MS100B14 D32	6,470	157	142.68	88	50	32	10	3.3	M8	16	図1
MS100B14 D38	6,470	157	142.68	88	50	38	10	3.3	M8	16	図1
MS100B14 D40	6,470	157	142.68	88	50	40	12	3.3	M8	16	図1
MS100B14 D45	6,770	157	142.68	88	50	45	14	3.8	M10	16	図1
MS100B14 D48	6,770	157	142.68	88	50	48	14	3.8	M10	16	図1
MS100B14 D50	6,770	157	142.68	88	50	50	14	3.8	M10	16	図1
MS100B14 D55	6,770	157	142.68	88	50	55	16	4.3	M12	16	図1
MS100B14 D60	6,770	157	142.68	88	50	60	18	4.4	M12	16	図1
MS100B15 D32	7,190	167	152.71	98	50	32	10	3.3	M8	16	図1
MS100B15 D38	7,190	167	152.71	98	50	38	10	3.3	M8	16	図1
MS100B15 D40	7,190	167	152.71	98	50	40	12	3.3	M8	16	図1
MS100B15 D45	7,190	167	152.71	98	50	45	14	3.8	M10	16	図1
MS100B15 D48	7,190	167	152.71	98	50	48	14	3.8	M10	16	図1
MS100B15 D50	7,190	167	152.71	98	50	50	14	3.8	M10	16	図1
MS100B15 D55	7,920	167	152.71	98	50	55	16	4.3	M12	16	図1
MS100B15 D60	7,920	167	152.71	98	50	60	18	4.4	M12	16	図1
MS100B16 D38	7,710	178	162.74	98	50	38	10	3.3	M8	16	図1
MS100B16 D45	7,710	178	162.74	98	50	45	14	3.8	M10	16	図1
MS100B16 D50	7,710	178	162.74	98	50	50	14	3.8	M10	16	図1
MS100B16 D55	8,320	178	162.74	98	50	55	16	4.3	M12	16	図1
MS100B16 D60	8,320	178	162.74	98	50	60	18	4.4	M12	16	図1
MS100B17 D38	8,320	188	172.79	107	50	38	10	3.3	M8	16	図1
MS100B17 D45	8,320	188	172.79	107	50	45	14	3.8	M10	16	図1
MS100B17 D50	8,320	188	172.79	107	50	50	14	3.8	M10	16	図1
MS100B17 D60	8,950	188	172.79	107	50	60	18	4.4	M12	16	図1
MS100B18 D38	8,730	198	182.84	107	50	38	10	3.3	M8	16	図1
MS100B18 D45	8,730	198	182.84	107	50	45	14	3.8	M10	16	図1
MS100B18 D50	8,730	198	182.84	107	50	50	14	3.8	M10	16	図1
MS100B18 D60	9,350	198	182.84	107	50	60	18	4.4	M12	16	図1
MS100B19 D38	9,130	209	192.90	107	50	38	10	3.3	M8	16	図1
MS100B19 D45	9,130	209	192.90	107	50	45	14	3.8	M10	16	図1
MS100B19 D50	9,130	209	192.90	107	50	50	14	3.8	M10	16	図1
MS100B19 D60	9,760	209	192.90	107	50	60	18	4.4	M12	16	図1
MS100B20 D38	9,650	219	202.96	107	50	38	10	3.3	M8	16	図1
MS100B20 D45	9,650	219	202.96	107	50	45	14	3.8	M10	16	図1
MS100B20 D50	9,650	219	202.96	107	50	50	14	3.8	M10	16	図1
MS100B20 D60	10,370	219	202.96	107	50	60	18	4.4	M12	16	図1
MS100B21 D45	10,270	229	213.03	107	50	45	14	3.8	M10	16	図1
MS100B21 D50	10,270	229	213.03	107	50	50	14	3.8	M10	16	図1
MS100B21 D60	11,560	229	213.03	107	50	60	18	4.4	M12	16	図1